

## InCommand® Version 4.3 Firmware Release

Ag Leader Technology is pleased to announce the release of new firmware. Features and improvements in this version are listed below. This free upgrade is available for download from <http://www.agleader.com>.

### IMPORTANT!

- A. It is recommend that a backup be created prior to upgrading display firmware

### New in 4.3

#### General

- **FIXED:** Norac UC5 initialization issue when operating through ISOBUS (TIA-125)
- **FIXED:** AutoSwath™ for spinner spreaders not responding when in previously applied area. (TIA-126)

### New in 4.2

#### General

- **NEW:** Live planting maps available in AgFiniti® Mobile from displays unlocked for DisplayCast® (March 2019 AgFiniti® Mobile release required) (Figure 1)
- **ENHANCED:** DisplayCast® sync improvements

#### Planting

- **NEW:** Option to enable/disable Advanced Seed Monitoring for any crop type (Seed flow limits still apply) (Figure 2)
- **ENHANCED:** Turn compensation improvements for SureDrive®

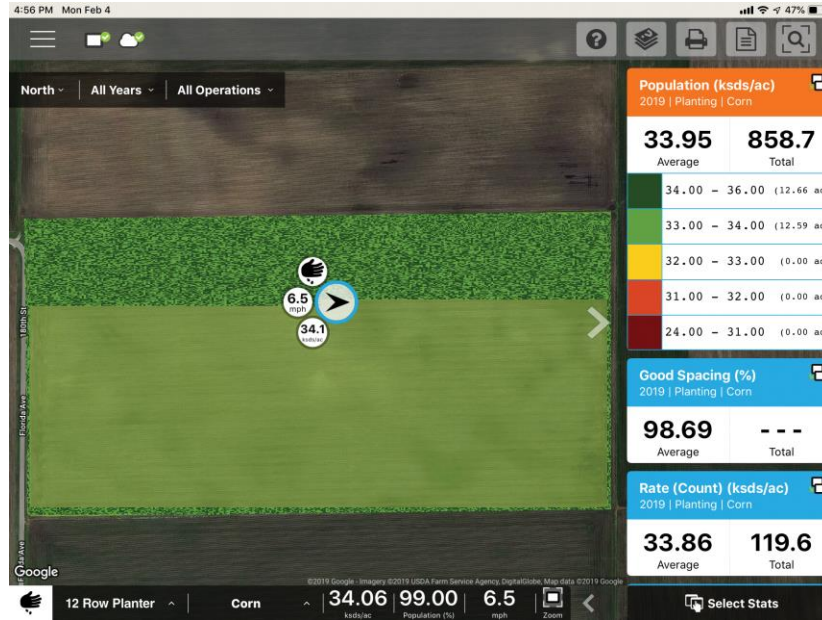


Figure 1 – Live maps from InCommand® in AgFiniti® Mobile

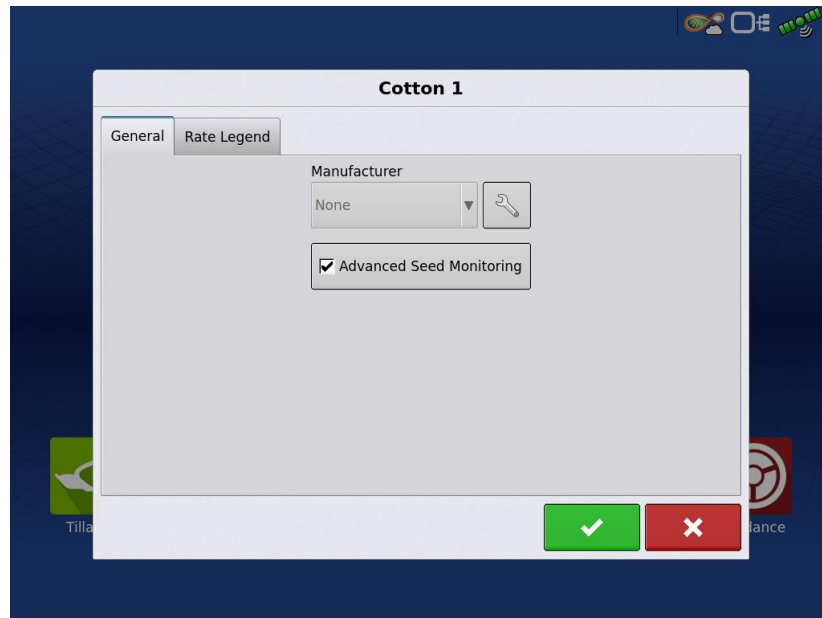


Figure 2 – Enable/Disable Advanced Seed Monitoring screen

## New in 4.0

### General

- **NEW:** Display alert history to track alarms and notifications (Figure 1)
- **ENHANCED:** Satellite imagery map available from AgFiniti® without a boundary
- **ENHANCED:** Increased custom user permission options (Figure 2)
- **ENHANCED:** Demo Mode simulation using SureDrive® and SureForce™

### GPS & Guidance

- **NEW:** Support for GPS 7500 (GLIDE, SBAS, TerraStar, RTK)
- **NEW:** Support for RTK Relay 400 & Relay 900 with GPS 7500
- **NEW:** Support for TerraStar-C Pro with GPS 7500
- **NEW:** DualTrac™: Dual GPS 7500's for slow speed steering
- **NEW:** Access path guidance options (Figure 3)
- **ENHANCED:** Enter custom TerraStar frequencies for GPS 6500 & GPS 7500.

### Planting

- **NEW:** SureForce™ individual row upforce/downforce system
- **ENHANCED:** Changed ASM default Spacing Quality alarm from 98% to 92%

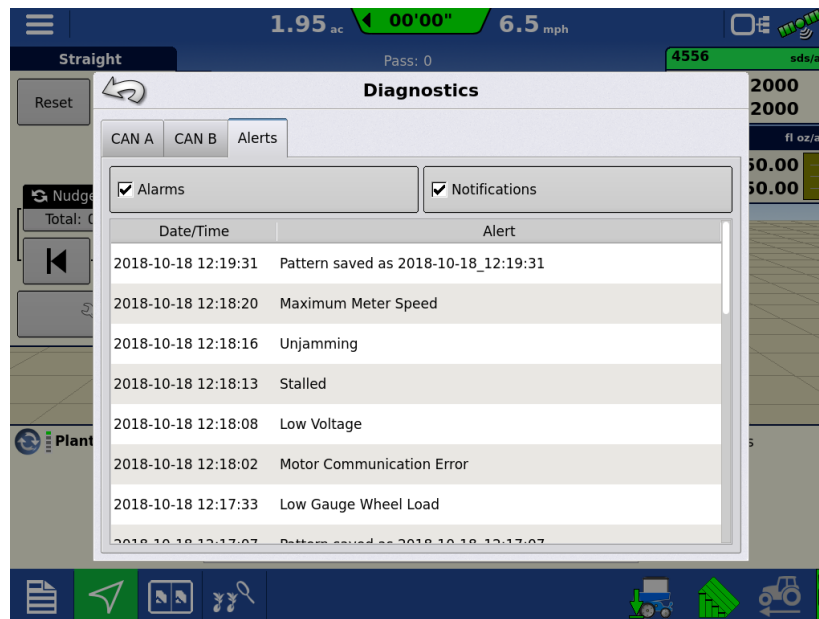


Figure 1 – Display Alert History

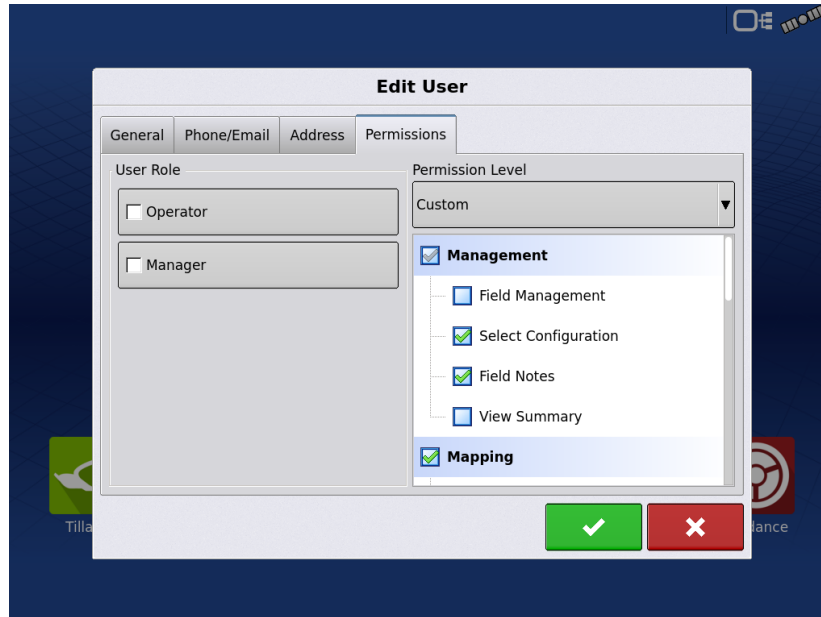


Figure 2 – Enhanced custom permissions – Select Configuration, Field Notes, Access Paths, Create Patterns

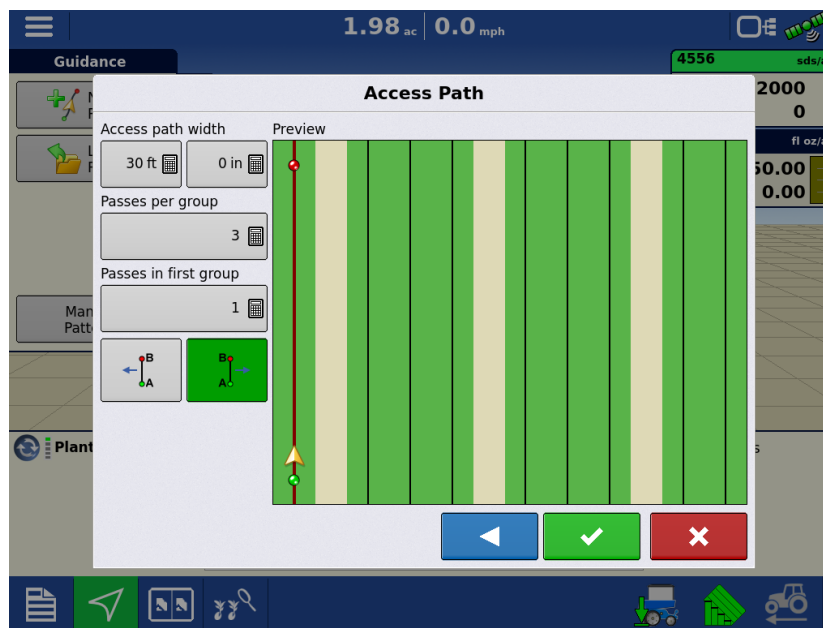


Figure 3 – Access Paths

## New in 3.5

### General

- **NEW:** Live stats available on all AgFiniti® connected devices, including displays unlocked for DisplayCast® (Figure 1-2)
- **ENHANCED:** StableLoc® always enabled with GPS 6500/6000 when using WAAS
- **ENHANCED:** Option to override ISOBUS ECU turn on/off look-aheads (TIA-117) (Figure 3)

### Guidance

- **FIXED:** SteerCommand®/OnTrac3™ error reporting (TIA-106)

### Planting

- **FIXED:** Intermittent SureDrive® rows not planting when starting a new field.
- **FIXED:** Correct vacuum value displayed with RxR Down Force only configurations (TIA-113)

### Harvest

- **ENHANCED:** Clarity for DisplayCast users when selecting harvest configurations and calibrations

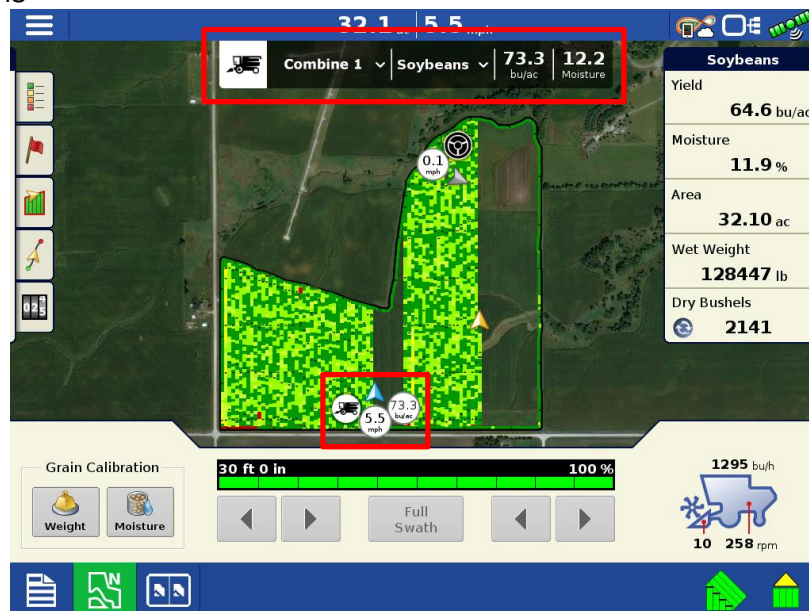


Figure 1 – Live stat machine focused information, for enhanced clarity across the operation.



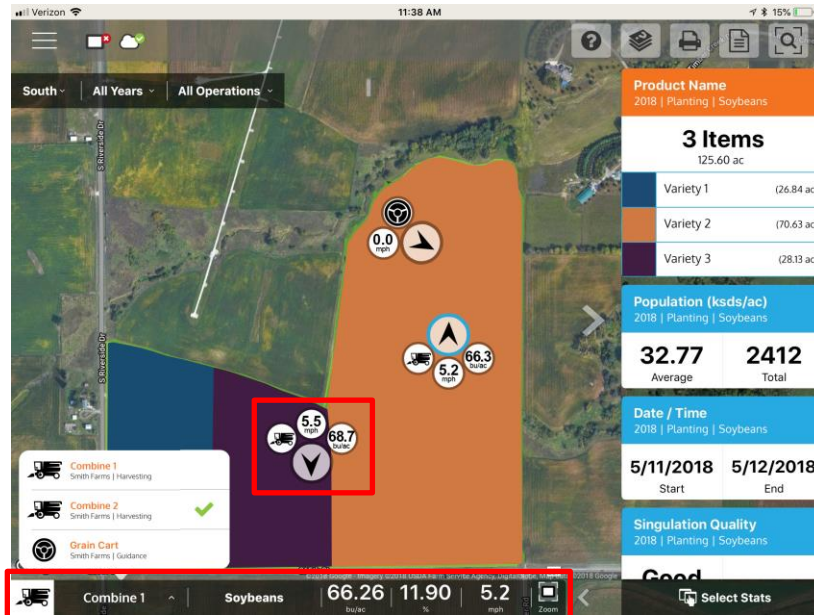


Figure 2 – Live stats on AgFiniti

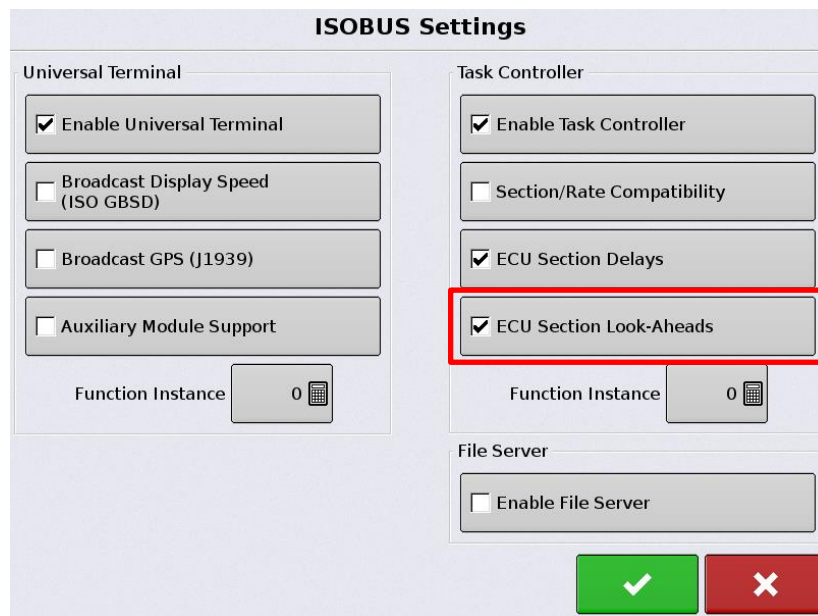



Figure 3 – Override ISOBUS ECU turn on/off look-aheads

## Instructions for updating:

1. Copy the latest upgrade file to your external USB drive. It will have a .fw3 file extension.
2. Insert the external USB drive in the display



8. Display will process the file and ask “The upgrade is ready to install. Would you like to continue?” Press 

9. Display will cycle power automatically

10. The display upgrade will progress through 100% and then automatically power cycle.

The upgrade is now complete