

PARTS MANUAL
FOR
HAGIE MODEL 204 HI-TRACTOR
SPRAYER OPTION

HAGIE MANUFACTURING COMPANY

BOX 273 CLARION, IOWA 50525 (515) 532-2861

COVERS MACHINE SERIAL NUMBERS: 085379001 thru 085379100

07-97 493174
02-08

DETASSELER IDENTIFICATION

Each Hagie detasseler is identified by means of a frame serial number. This serial number denotes the model, the year in which it was built, and the number of the detasseler. As for further identification, the engine has a serial number, the hydrostatic pump has a serial number, the wheel motors have identification tags, and the planetary hubs have identification plates that describe the type of mount and gear ratio. To insure prompt, efficient service when ordering parts or requesting service repairs from Hagie Manufacturing Company, record the serial and identification numbers in the space provided below.

NOTE: Reference to left hand and right hand used throughout this manual refers to the position when seated in the operator's seat facing forward.

DETASSELER SERIAL NUMBER

ENGINE SERIAL NUMBER

PLANETARY HUB IDENTIFICATION NUMBERS

TABLE OF CONTENTS

FRONT LEG ASSEMBLY 4-5

REAR LEG ASSEMBLY 6

RADIATOR AND OIL COOLER ASSEMBLY 7

SOLUTION VFC LEVER ASSEMBLY 8

VARIABLE FLOW CONTROL ASSEMBLY 9

LADDER ASSEMBLY 10

SOLUTION CONTROL BOX ASSEMBLY 11

SOLUTION SOLENOID VALVE ASSEMBLY 12

SOLUTION PUMP ASSEMBLY 13

SOLUTION TANK ASSEMBLY 14-15

TANK SHIELD 16

55 " DROP NOZZLE ASSEMBLY 17

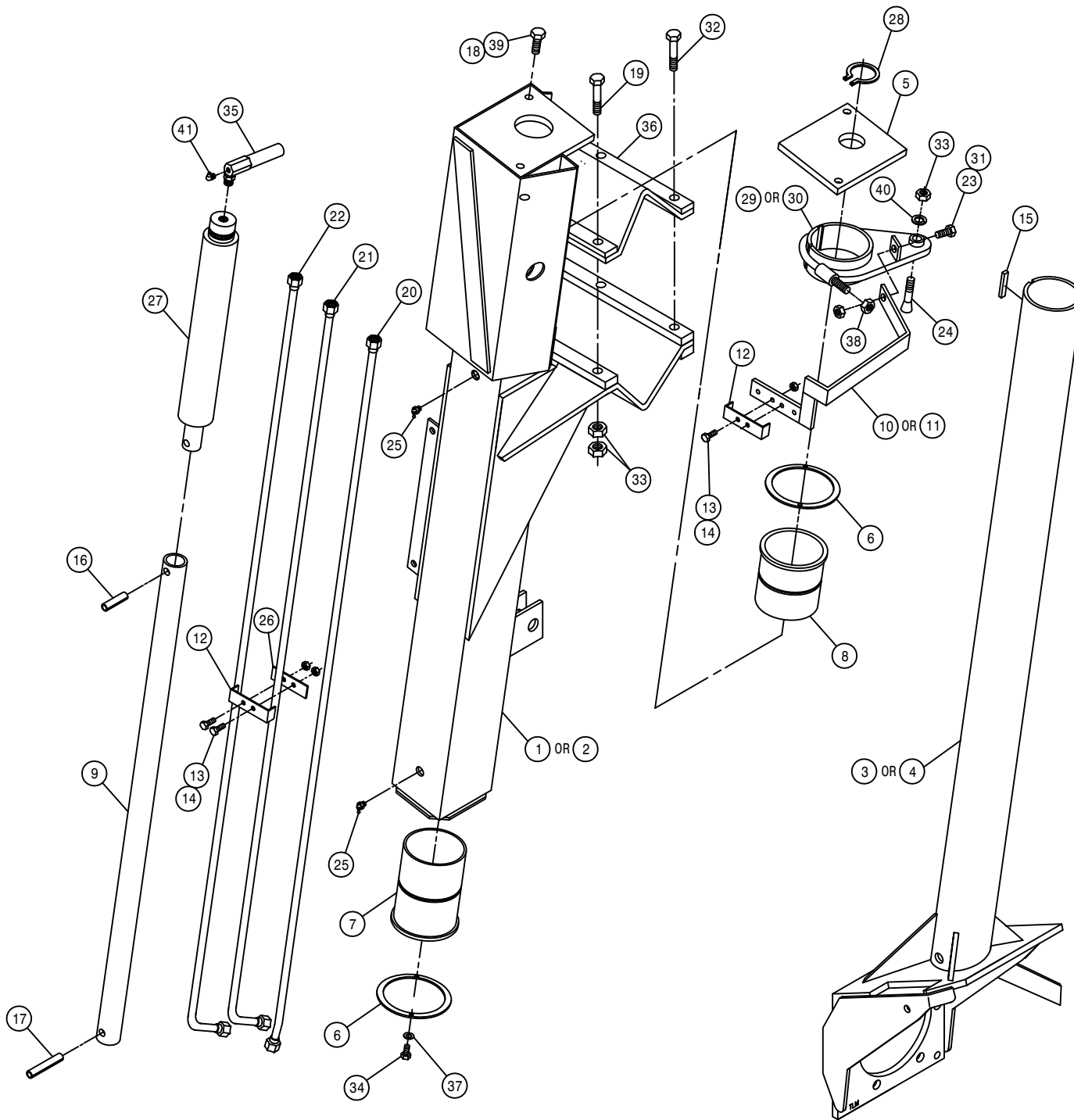
HYDRAULIC SCHEMATIC 18-23

WIRING DIAGRAM 24

FRONT LEG ASSEMBLY

DET. QTY PART NO. DESCRIPTION

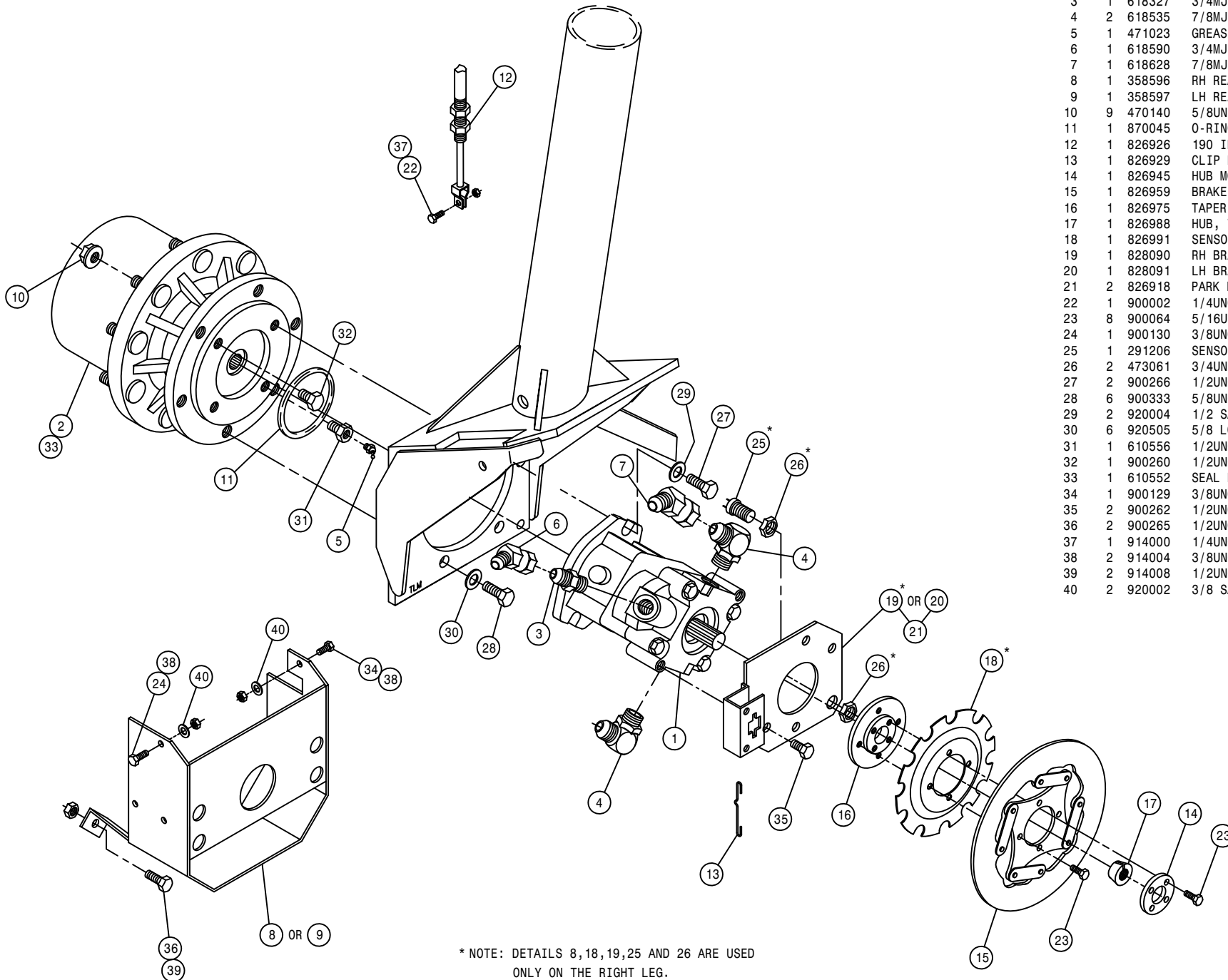
1	1	357811	RH FRT OUTER LEG WLD,204COMBO
2	1	357812	LH FRT OUTER LEG WLD,204COMBO
3	1	357800	RH FRT INNER LEG WLD, 204 94
4	1	357801	LH FRT INNER LEG WLD, 204 94
5	1	358562	LEG CYL MTG PLATE 280 89
6	2	358563	FRT LEG BRG KPR 280 89
7	1	358564	FRT LEG LWR NYL SLEEVE 280 89
8	1	358565	FRT LEG UPR NYL SLEEVE 280 89
9	1	358566	LEG CYL SHAFT EXTENSION280 89
10	1	358707	RH FRT LEG TUBE BRKT WLD280TA
11	1	358708	LH FRT LEG TUBE BRKT WLD280TA
12	2	358739	FRT LEG HYD TUBE CLMP, 284 94
13	4	900004	1/4UNC X 1 1/4 HEX BOLT
14	4	470121	1/4UNC HEX FLANGE LOCK NUT
15	1	470185	KEY .25 X .375 X 2.00 LG
16	1	473903	SPIRAL PIN 1/2 X 2 640
17	1	473904	SPIRAL PIN 1/2 X 3 640
18	2	914008	1/2UNC HEX STOVER NUT
19	3	900836	5/8UNF X 3 1/4 HEX BOLT GR8
20	1	615659	FRT LEG INNER HYD TUBE,204 94
21	1	615660	FRT LEG CNTR HYD TUBE,204 94
22	1	615661	FRT LEG OUTER HYD TUBE,204 94
23	1	900129	3/8UNC X 1" HEX BOLT
24	1	749293	STRG ARM BOLT, TAPERED
25	2	471023	GREASE ZERK 1/4-28 X 45
26	1	358740	FRT LEG HYD TUBE KPR, 284 94
27	1	620570	HYD CYL LEG LEVEL 2.00 X 12
28	1	629515	SNAP RING 1 3/4 EXTRN HDUTY
29	1	749290	RH STRG ARM WLD,280 TREAD ADJ
30	1	749291	LH STRG ARM WLD,280 TREAD ADJ
31	1	914004	3/8UNC HEX STOVER NUT
32	3	900837	5/8UNF X 3 1/2 HEX BOLT GR8
33	13	914811	5/8UNF HEX NUT GR8
34	4	900000	1/4UNC X 1/2 HEX BOLT
35	1	615614	FRT LEG CYL JUMPER HOSE280 89
36	1	358759	LEG MT V-PLT WLD, 284T 94
37	4	920500	1/4 LOCK WASHER
38	1	914010	5/8UNC HEX STOVER NUT
39	2	900265	1/2UNC X 1 1/2 HEX BOLT
40	1	920505	5/8 LOCK WASHER
41	1	471027	GREASE ZERK 1/8NPT 90DEG LP



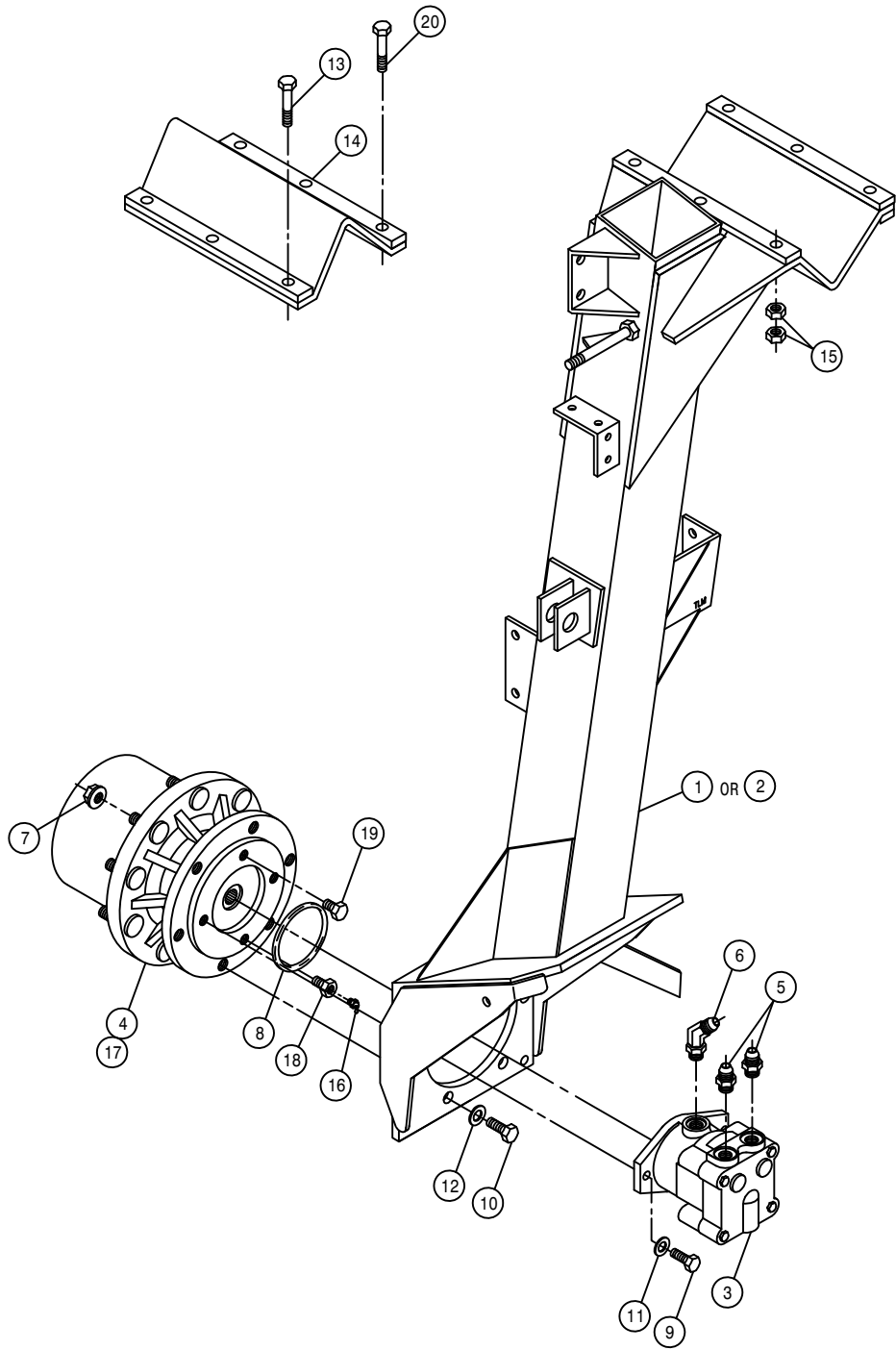
FRONT LEG BRAKE ASSEMBLY

DET. QTY PART NO. DESCRIPTION

1	1	610557	SUND M35-3102 WHL MTR W/SHFT
2	1	610663	TORQ HUB, 24:1 B-MT W1BFFZ
3	1	618327	3/4MJIC-7/8MOR ADPTR
4	2	618535	7/8MJIC-90-1 1/16MOR LBO
5	1	471023	GREASE ZERK 1/4-28 X 45
6	1	618590	3/4MJIC-45-3/4FJIC SWIV LBO
7	1	618628	7/8MJIC-45-7/8FJIC SWIV LBO
8	1	358596	RH REAR WHL MTR SHLD WLD 280
9	1	358597	LH REAR WHL MTR SHLD WLD 280
10	9	470140	5/8UNF HEX SMTH FLANGE NUT PL
11	1	870045	O-RING 4 1/8 OD X 4 ID
12	1	826926	190 IN BRAKE CABLE
13	1	826929	CLIP BRAKE RETAINER
14	1	826945	HUB MOUNT, BRAKE
15	1	826959	BRAKE DISC SUB ASSY
16	1	826975	TAPER LOCK HUB
17	1	826988	HUB, TAPER LOCK 13 TEETH
18	1	826991	SENSOR DISC, 11N,280 BRAKE 93
19	1	828090	RH BRAKE MT WLD, 204 94
20	1	828091	LH BRAKE MT WLD, 204 94
21	2	826918	PARK BRAKE PAD
22	1	900002	1/4UNC X 3/4 HEX BOLT
23	8	900064	5/16UNC X 3/4 HEX BOLT
24	1	900130	3/8UNC X 1 1/4 HEX BOLT
25	1	291206	SENSOR, SPEEDO/TACH W/NUT
26	2	473061	3/4UNF TRUSEAL HEX NUT
27	2	900266	1/2UNC X 1 3/4 HEX BOLT
28	6	900333	5/8UNC X 1 1/2 HEX BOLT
29	2	920004	1/2 SAE FLAT WASHER
30	6	920505	5/8 LOCK WASHER
31	1	610556	1/2UNC X 1/2 ZERK BOLT T-HUB
32	1	900260	1/2UNC X 1/2 H BOLT GR2 UNPLT
33	1	610552	SEAL BOOT FOR W1BFNZ, W2B2FZ
34	1	900129	3/8UNC X 1" HEX BOLT
35	2	900262	1/2UNC X 3/4 HEX BOLT
36	2	900265	1/2UNC X 1 1/2 HEX BOLT
37	1	914000	1/4UNC HEX STOVER NUT
38	2	914004	3/8UNC HEX STOVER NUT
39	2	914008	1/2UNC HEX STOVER NUT
40	2	920002	3/8 SAE FLAT WASHER

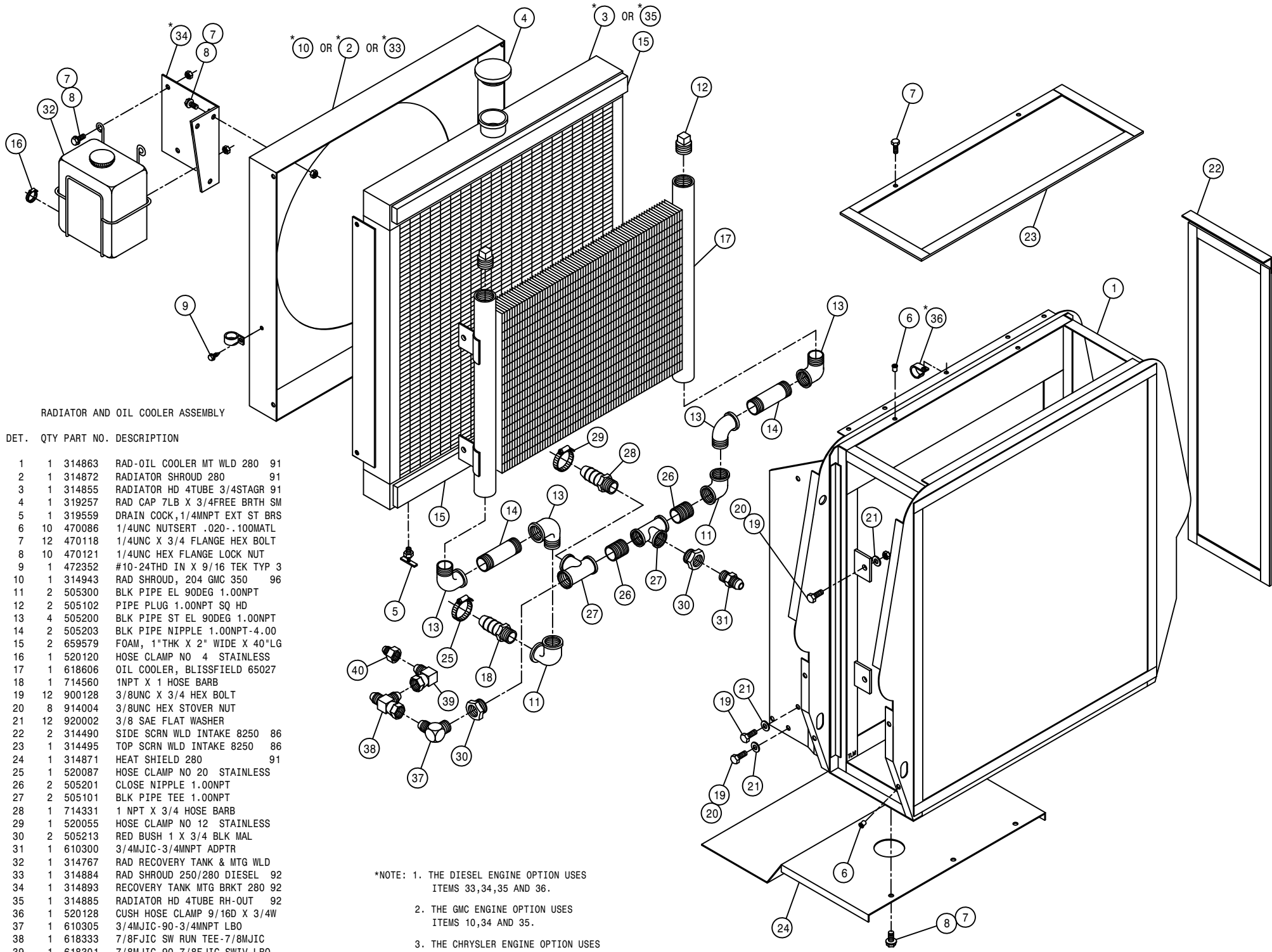


* NOTE: DETAILS 8, 18, 19, 25 AND 26 ARE USED ONLY ON THE RIGHT LEG.



REAR LEG ASSEMBLY

DET.	QTY	PART NO.	DESCRIPTION
	1	357813	RH REAR LEG WLD,204 COMBO
	1	357814	LH REAR LEG WLD,204 COMBO
	1	610567	SUND M25-3000 WHL MTR 1.5CI
	1	610660	TORQ HUB, 18:1 B-MT W1BFFZ
	2	611126	7/8MJIC-7/8MOR ADPTR
	1	618496	9/16MJIC-45-3/4MOR LBO
	9	470140	5/8UNF HEX SMTH FLANGE NUT PLT
	1	870045	O-RING 4 1/8 OD X 4 ID
	2	900266	1/2UNC X 1 3/4 HEX BOLT
	6	900333	5/8UNC X 1 1/2 HEX BOLT
	2	920504	1/2 LOCK WASHER
	6	920505	5/8 LOCK WASHER
	3	900836	5/8UNF X 3 1/4 HEX BOLT GR8
	1	358759	LEG MT V-PLT WLD, 284T 94
	12	914811	5/8UNF HEX NUT GR8
	1	471023	GREASE ZERK 1/4-28 X 45
	1	610552	SEAL BOOT FOR W1BFNZ, W2B2FZ
	1	610556	1/2UNC X 1/2 ZERK BOLT T-HUB
	1	900260	1/2UNC X 1/2 H BOLT GR2 UNPLT
	3	900837	5/8UNF X 3 1/2 HEX BOLT GR8



RADIATOR AND OIL COOLER ASSEMBLY

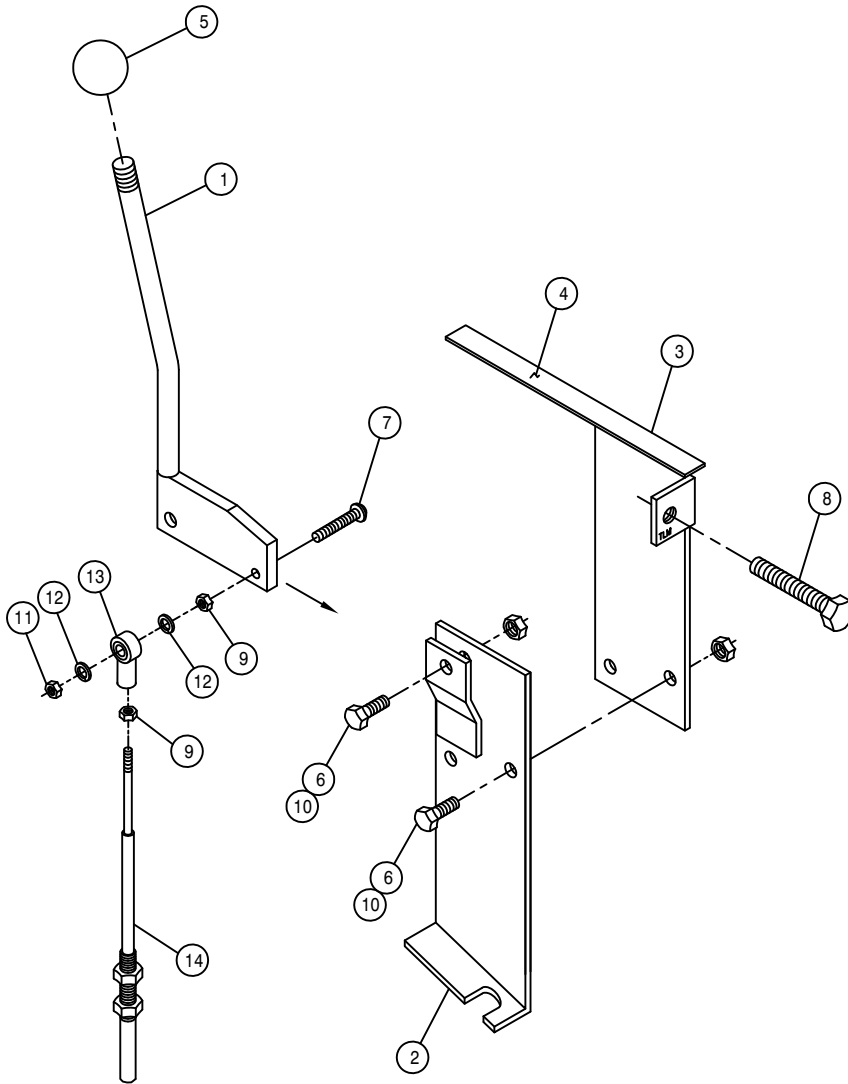
DET. QTY PART NO. DESCRIPTION

1	1	314863	RAD-OIL COOLER MT WLD 280	91
2	1	314872	RADIATOR SHROUD 280	91
3	1	314855	RADIATOR HD 4TUBE 3/4STAGR	91
4	1	319257	RAD CAP 7LB X 3/4FREE BRTH SM	
5	1	319559	DRAIN COCK, 1/4MNPT EXT ST BRS	
6	10	470086	1/4UNC NUTSERT .020-.100MATL	
7	12	470118	1/4UNC X 3/4 FLANGE HEX BOLT	
8	10	470121	1/4UNC HEX FLANGE LOCK NUT	
9	1	472352	#10-24THD IN X 9/16 TEK TYP 3	
10	1	314943	RAD SHROUD, 204 GMC 350	96
11	2	505300	BLK PIPE EL 90DEG 1.00NPT	
12	2	505102	PIPE PLUG 1.00NPT SQ HD	
13	4	505200	BLK PIPE ST EL 90DEG 1.00NPT	
14	2	505203	BLK PIPE NIPPLE 1.00NPT-4.00	
15	2	659579	FOAM, 1"THK X 2" WIDE X 40"LG	
16	1	520120	HOSE CLAMP NO 4 STAINLESS	
17	1	618606	OIL COOLER, BLISSFIELD 65027	
18	1	714560	1NPT X 1 HOSE BARB	
19	12	900128	3/8UNC X 3/4 HEX BOLT	
20	8	914004	3/8UNC HEX STOVER NUT	
21	12	920002	3/8 SAE FLAT WASHER	
22	2	314490	SIDE SCR N WLD INTAKE 8250	86
23	1	314495	TOP SCR N WLD INTAKE 8250	86
24	1	314871	HEAT SHIELD 280	91
25	1	520087	HOSE CLAMP NO 20 STAINLESS	
26	2	505201	CLOSE NIPPLE 1.00NPT	
27	2	505101	BLK PIPE TEE 1.00NPT	
28	1	714331	1 NPT X 3/4 HOSE BARB	
29	1	520055	HOSE CLAMP NO 12 STAINLESS	
30	2	505213	RED BUSH 1 X 3/4 BLK MAL	
31	1	610300	3/4MJIC-3/4MNPT ADPTR	
32	1	314767	RAD RECOVERY TANK & MTG WLD	
33	1	314884	RAD SHROUD 250/280 DIESEL	92
34	1	314893	RECOVERY TANK MTG BRKT 280	92
35	1	314885	RADIATOR HD 4TUBE RH-OUT	92
36	1	520128	CUSH HOSE CLAMP 9/16D X 3/4W	
37	1	610305	3/4MJIC-90-3/4MNPT LBO	
38	1	618333	7/8FJIC SW RUN TEE-7/8MJIC	
39	1	618301	7/8MJIC-90-7/8FJIC SWIV LBO	
40	1	618523	7/8FJIC-3/4MJIC ADPTR	

*NOTE: 1. THE DIESEL ENGINE OPTION USES ITEMS 33,34,35 AND 36.
 2. THE GMC ENGINE OPTION USES ITEMS 10,34 AND 35.
 3. THE CHRYSLER ENGINE OPTION USES ITEMS 2 AND 3.

7

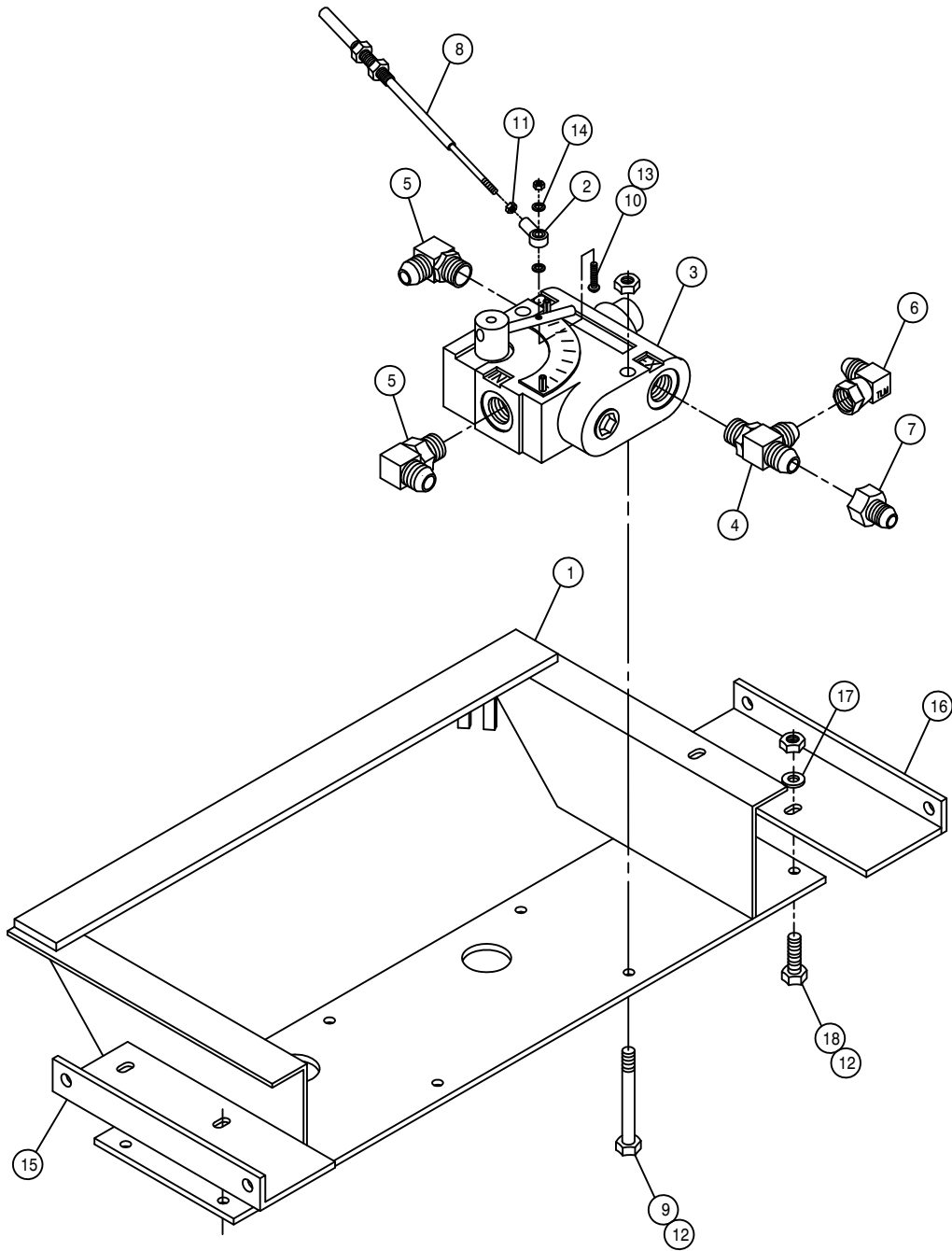
174007



SOLUTION VFC LEVER ASSEMBLY

DET. QTY PART NO. DESCRIPTION

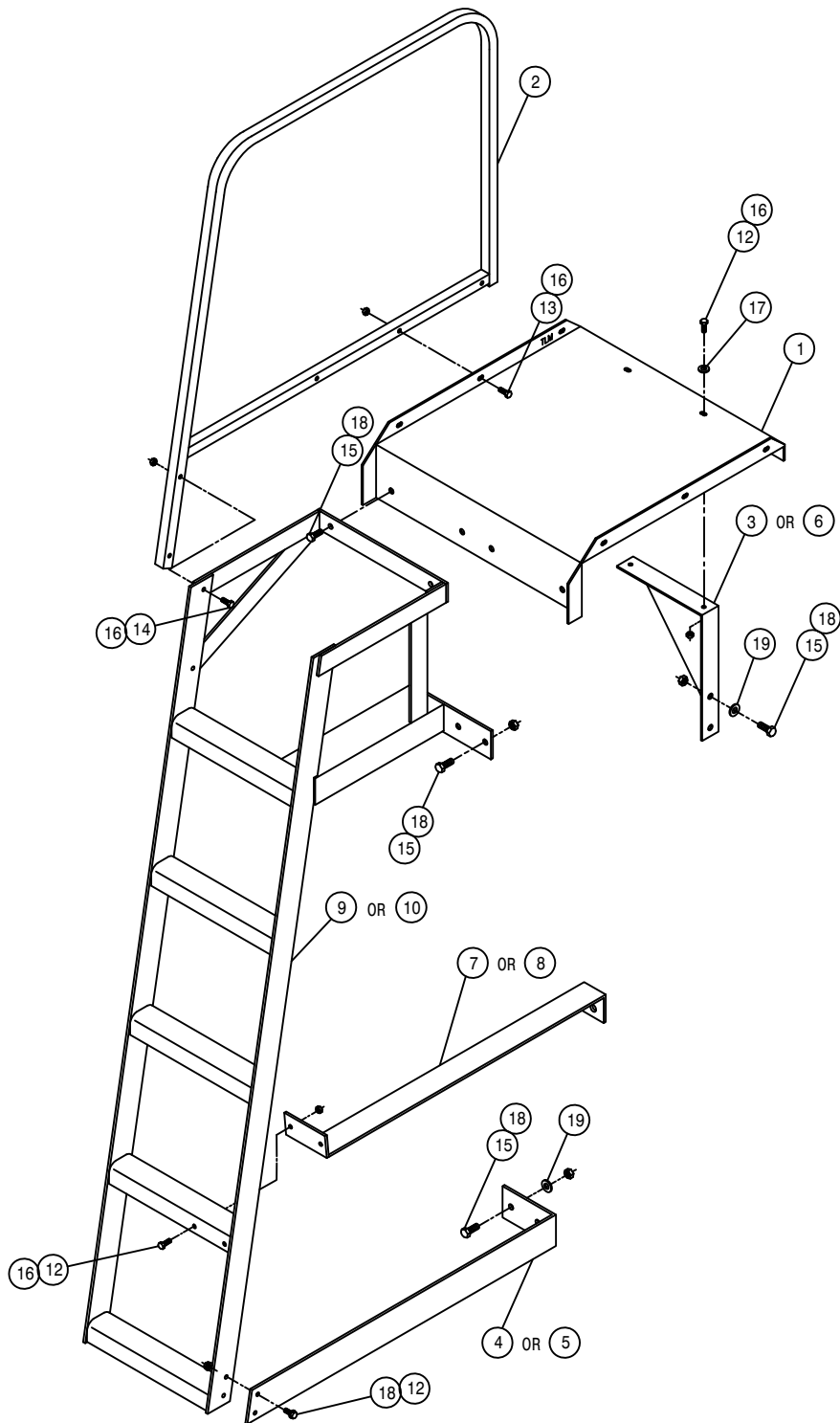
1	1	342317	SOLU VFC LEVER WLD, 204 COMBO
2	1	342320	VFC LEVER MT WLD, 204 COMBO
3	1	342322	VFC LEVER STOP WLD,204 COMBO
4	1	650969	DECAL SPRAY PRESS HIGH OFF
5	1	785007	KNOB,1 3/16" BALL,RED,3/8-16
6	3	900003	1/4UNC X 1" HEX BOLT
7	1	903893	10-32 X 1" SLT RD HD MACH SCR
8	1	906072	5/16UNC X 3" HEX BOLT FULL
9	2	910027	10-32 HEX NUT
10	3	914000	1/4UNC HEX STOVER NUT
11	1	914027	10-32 HEX STOVER NUT
12	2	920510	#10 LOCK WASHER
13	1	473921	BALL JOINT NO 10-32 THD
14	1	785033	CTRL CABLE 10-32 3IN X 72 LG



VARIABLE FLOW CONTROL ASSEMBLY

DET. QTY PART NO. DESCRIPTION

1	1	342209	SOLU VFC MT WLD	94
2	1	473921	BALL JOINT NO 10-32 THD	
3	1	606818	FLO CONT FCR51 0-16GPM 7/8FOR	
4	1	618130	7/8MOR RUN TEE-7/8MJIC	
5	2	618183	3/4MJIC-90-7/8MOR LBO	
6	1	618301	7/8MJIC-90-7/8FJIC SWIV LBO	
7	1	618523	7/8FJIC-3/4MJIC ADPTR	
8	1	785033	CTRL CABLE 10-32 3IN X 72 LG	
9	2	900008	1/4UNC X 2 1/2 HEX BOLT	
10	1	903893	10-32 X 1" SLT RD HD MACH SCR	
11	1	910027	10-32 HEX NUT	
12	6	914000	1/4UNC HEX STOVER NUT	
13	1	914027	10-32 HEX STOVER NUT	
14	2	920510	#10 LOCK WASHER	
15	1	342326	LH FLO DIV MT BRKT,204 COMBO	
16	1	342325	RH FLO DIV MT BRKT,204 COMBO	
17	4	920000	1/4 SAE FLAT WASHER	
18	4	900003	1/4UNC X 1" HEX BOLT	



LADDER ASSEMBLY

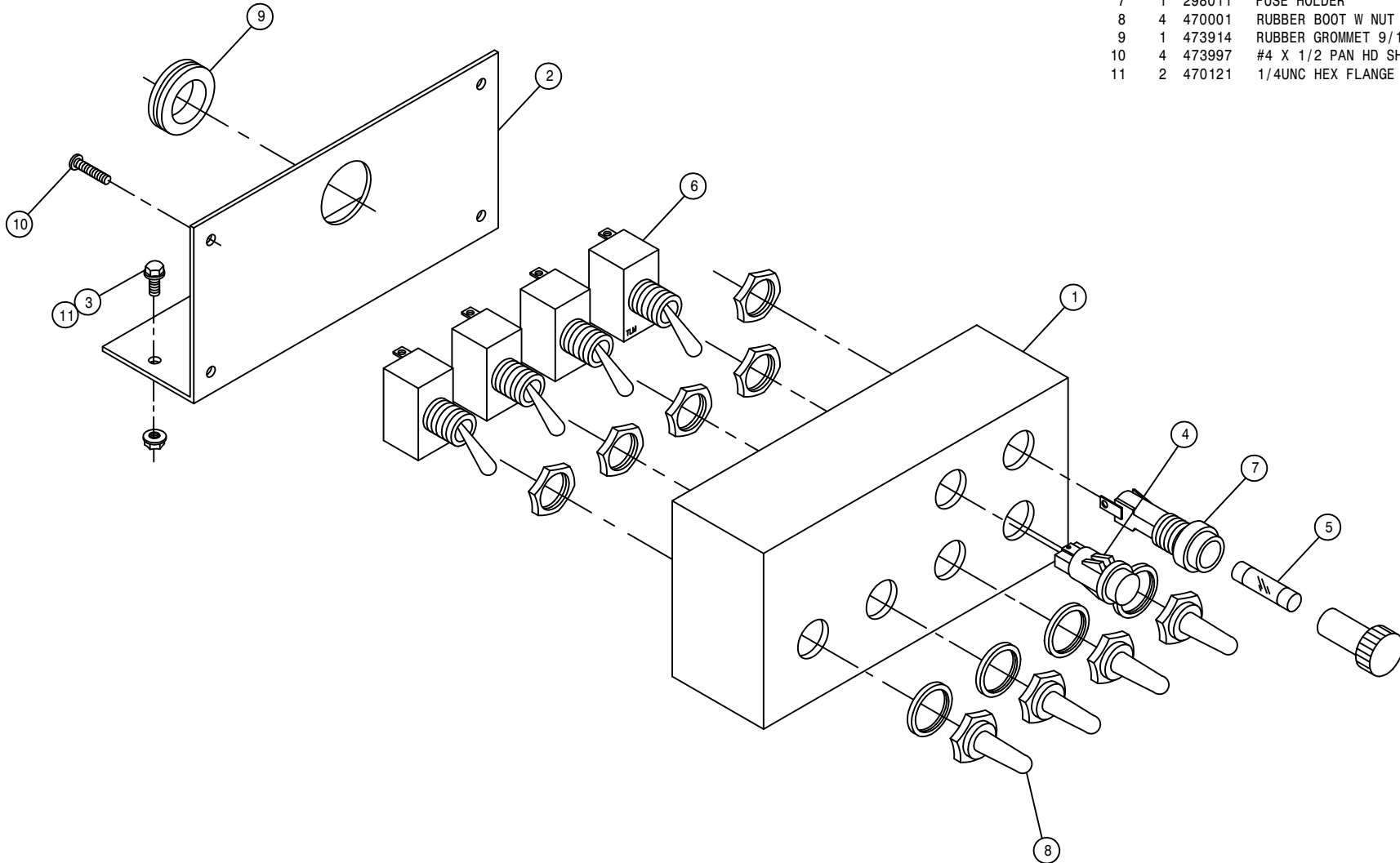
DET. QTY PART NO. DESCRIPTION

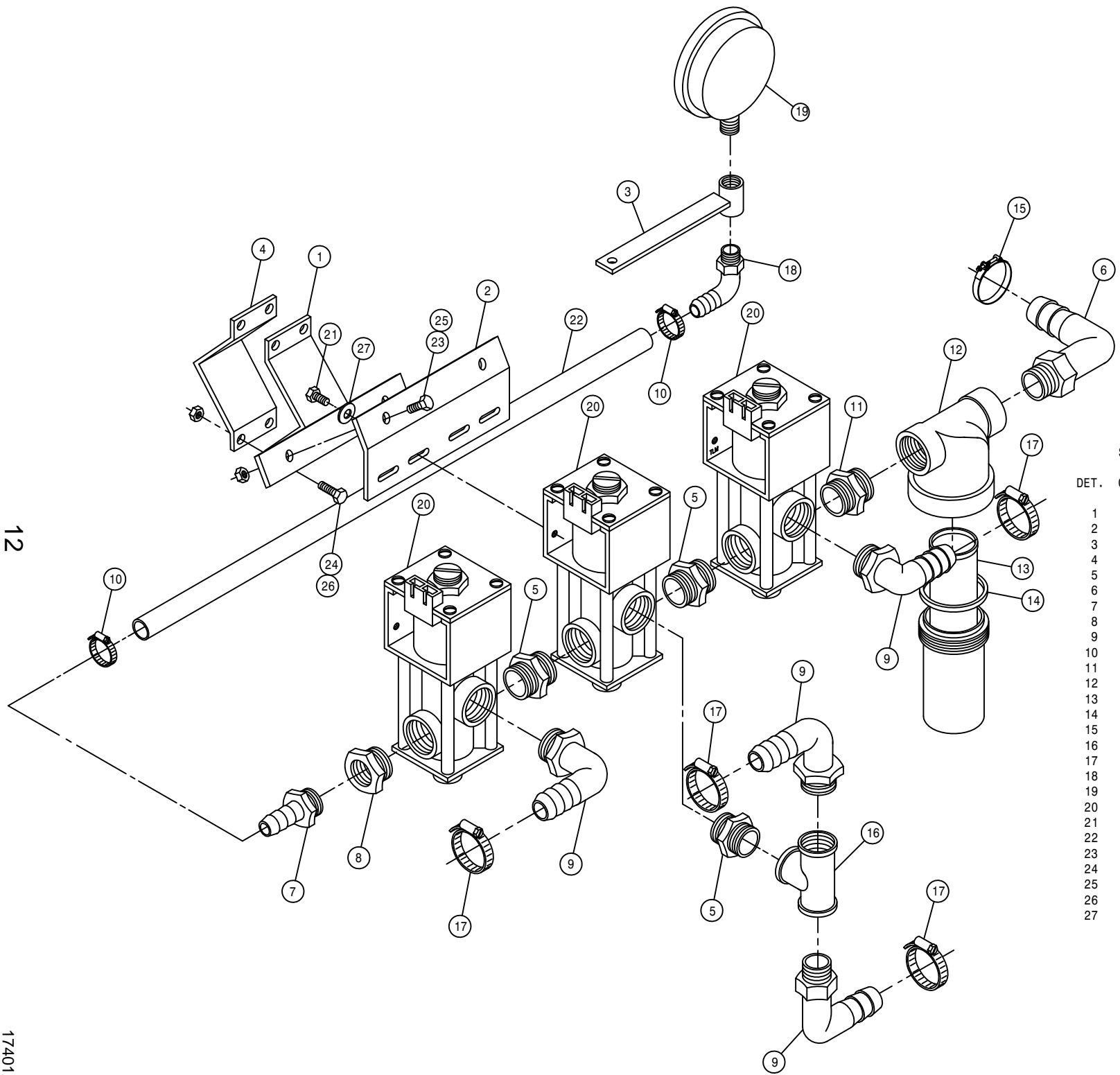
1	1	341775	LADDER PLATFORM 280	89
2	1	341776	LADDER HANDRAIL WLD 280	89
3	1	341779	LH LADDER MT PLATE, 280	89
4	1	341893	RH LWR LADDER STALK DEFLEC280	
5	1	341894	LH LWR LADDER STALK DEFLEC280	
6	1	341999	RH LADDER MT PLATE, 280	89
7	1	342000	RH LADDER BRACE WELD 280	92
8	1	342001	LH LADDER BRACE WELD 280	92
9	1	342222	RH LADDER WLD, 284T	94
10	1	342223	LH LADDER WLD, 284T	94
11	2	470121	1/4UNC HEX FLANGE LOCK NUT	
12	6	470118	1/4UNC X 3/4 FLANGE HEX BOLT	
13	3	900004	1/4UNC X 1 1/4 HEX BOLT	
14	2	900005	1/4UNC X 1 1/2 HEX BOLT	
15	8	900129	3/8UNC X 1" HEX BOLT	
16	9	914000	1/4UNC HEX STOVER NUT	
17	2	920000	1/4 SAE FLAT WASHER	
18	8	914004	3/8UNC HEX STOVER NUT	
19	4	920002	3/8 SAE FLAT WASHER	

SOLUTION CONTROL BOX ASSEMBLY

DET. QTY PART NO. DESCRIPTION

DET.	QTY	PART NO.	DESCRIPTION
1	1	690602	SWITCH BOX, SOLU, 204 COMBO 96
2	1	002745	SWITCH BOX MT, DEPTH CMD
3	2	470122	1/4UNC X 1/2 FLANGE HEX BOLT
4	1	390318	INDICATOR LIGHT, RED
5	1	291602	FUSE 10 AMP
6	4	291608	TOGGLE SWITCH, ON-OFF, UNLIT
7	1	298011	FUSE HOLDER
8	4	470001	RUBBER BOOT W NUT FOR 298012
9	1	473914	RUBBER GROMMET 9/16 ID
10	4	473997	#4 X 1/2 PAN HD SHT MTL SCREW
11	2	470121	1/4UNC HEX FLANGE LOCK NUT





SOLUTION SOLENOID VALVE ASSEMBLY

DET.	QTY	PART NO.	DESCRIPTION
1	1	164282	SOLU VLV MT BRKT WLD,204COMBO
2	1	164284	SOLU VLV MT PLT, 204 COMBO
3	1	164285	PRESS GAUGE MT WLD,204 COMBO
4	1	438324	75IN OUTRGR BRACE CLAMP
5	3	500013	1"NPT HEX PIPE NIPPLE, POLY
6	1	500016	.12NPT-.250HOSE BARB 90 NYLON
7	1	500019	3/4NPT-1/2HOSE BARB, POLY
8	1	505214	1"-3/4"NPT REDU BUSH, POLY
9	4	500067	1 NPT-90-3/4 HOSE BARB, POLY
10	2	520080	HOSE CLAMP NO 10 STAINLESS
11	1	500048	1 1/2X1"NPT REDU NIPPLE, POLY
12	1	690474	1 1/2 LINE STRAINER50M 150PSI
13	1	690475	50 MESH SCREEN FOR 690474
14	1	690476	STRAINER GASKET FOR 690474
15	1	520132	1.62/1.87 T-BOLT HOSE CLAMP
16	1	500075	1" NPT PIPE TEE, POLY
17	4	520090	HOSE CLAMP NO 16 STAINLESS
18	1	618556	1/4NPT-90-1/2 HOSE BARB,POLY
19	1	690359	PRESSURE GA GLYCERI 100 PSI
20	3	690469	SOLUTION VALVE, AA145H VITON
21	4	900000	1/4UNC X 1/2 HEX BOLT
22	1	601259	HOSE, .50 1BR EPDM X 30.00
23	2	900128	3/8UNC X 3/4 HEX BOLT
24	4	900265	1/2UNC X 1 1/2 HEX BOLT
25	2	914004	3/8UNC HEX STOVER NUT
26	4	914008	1/2UNC HEX STOVER NUT
27	4	920000	1/4 SAE FLAT WASHER

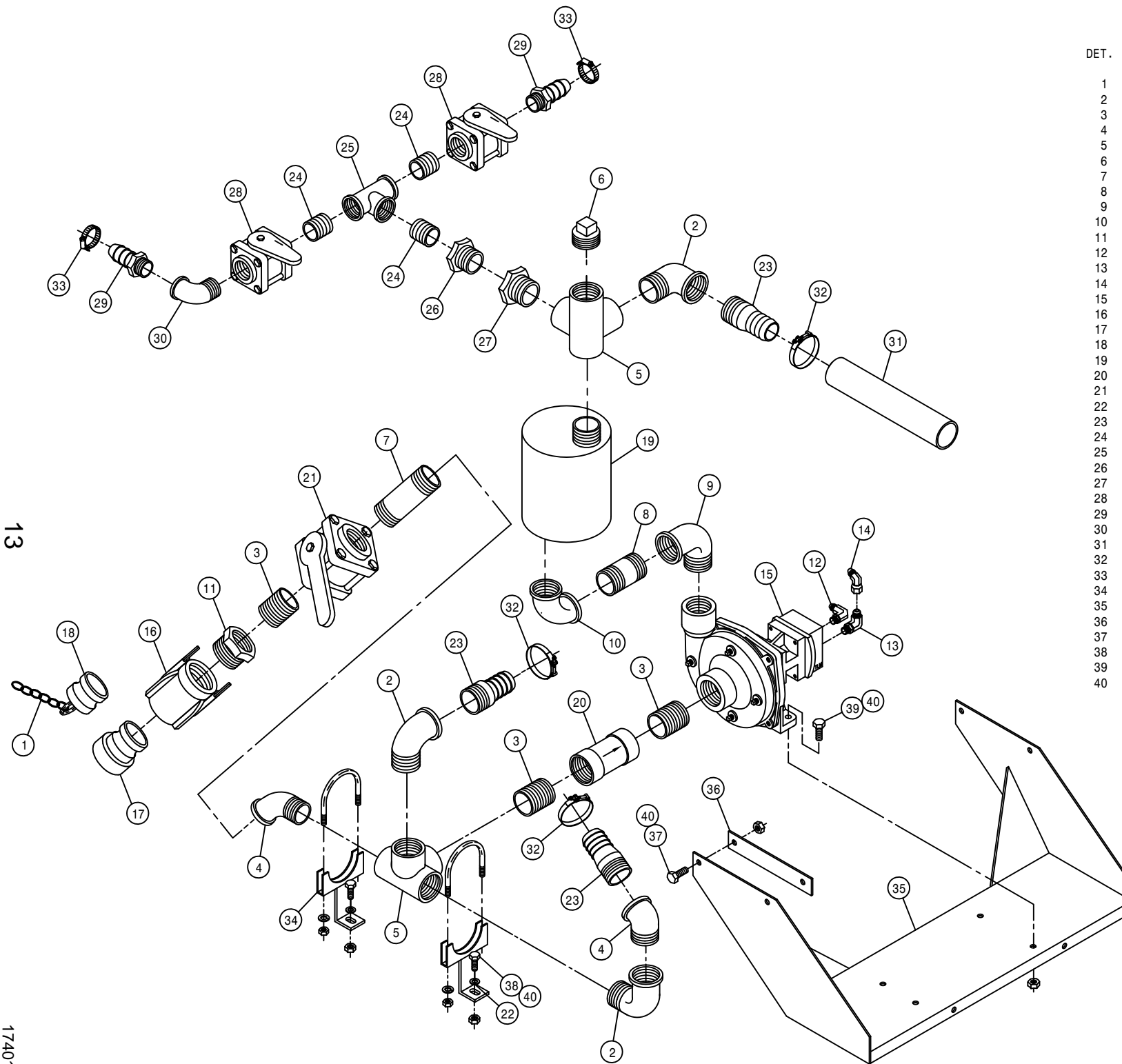
12

174012

SOLUTION PUMP ASSEMBLY

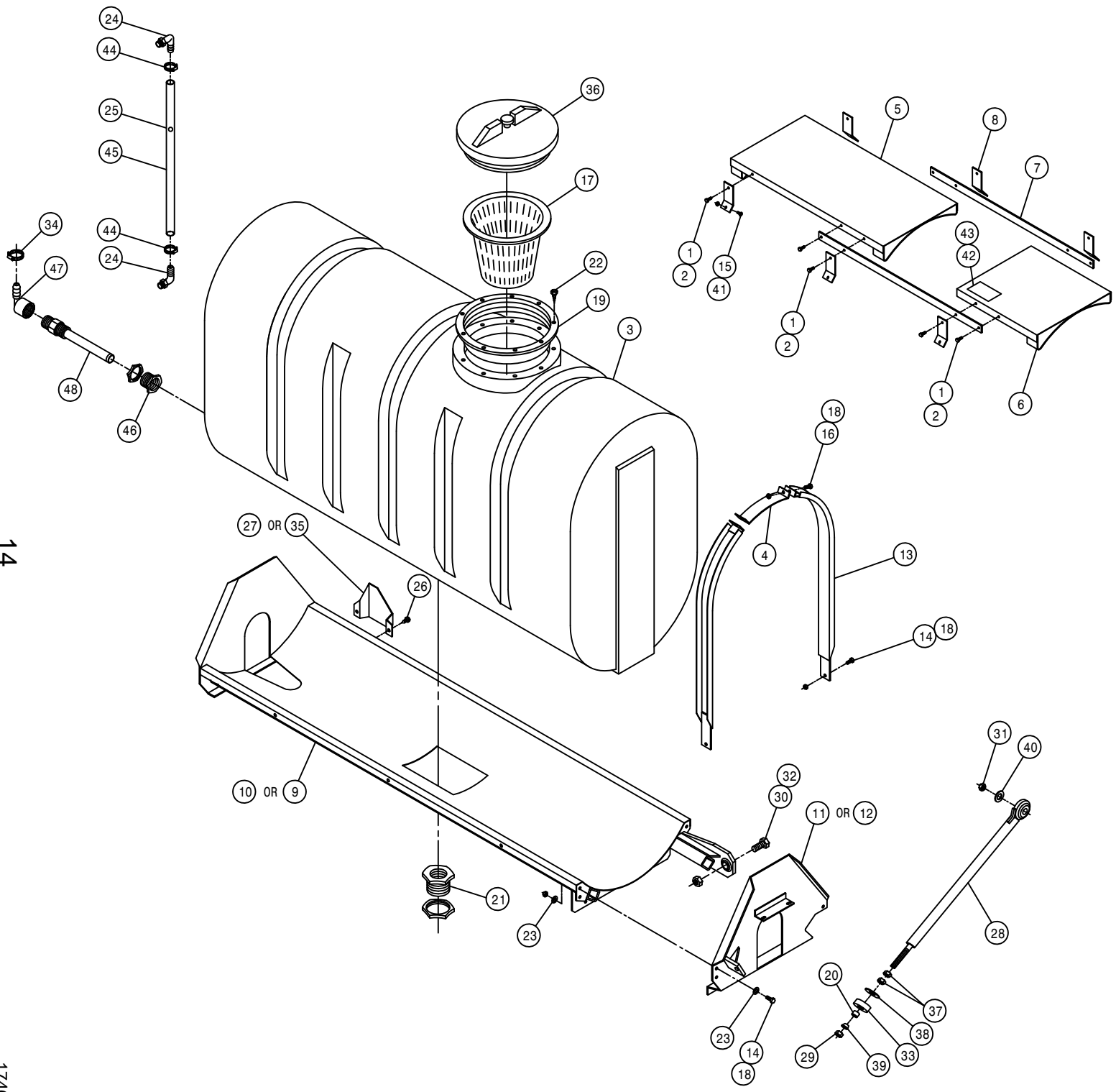
DET. QTY PART NO. DESCRIPTION

1	1	160986	CHAIN, 12.00 LONG
2	3	507018	BLK PIPE ST EL 90DEG 1.50NPT
3	3	507019	CLOSE NIPPLE 1.50NPT
4	2	507024	BLK PIPE ST EL 45DEG 1.50NPT
5	2	507253	BLK PIPE SIDE OUTLET TEE 1.50
6	1	507400	PIPE PLUG 1.50NPT SQ HD
7	1	507007	BLK PIPE NIPPLE 1.50NPT-4.00
8	1	506603	BLK PIPE NIPPLE 1.25NPT-3.00
9	1	506410	BLK PIPE ST EL 90DEG 1.25NPT
10	1	506303	BLK PIPE EL 90DEG 1.25NPT
11	1	507717	RED BUSH 2 X 1 1/2
12	1	611145	3/4MJIC-90-1/2MNPT LBO
13	1	618241	3/4MJIC-90-3/4MOR LBO
14	2	618590	3/4MJIC-45-3/4FJIC SWIV LBO
15	1	690249	HYPRO OPEN CENTER PUMP
16	1	690390	2.00 FEMALE NPT COUPLER
17	1	690391	2.00 FEMALE NPT ADPTR
18	1	690392	ADPTR PLG FOR 2.00 NPT COUPLR
19	1	690433	PRIMER TANK WLD, SOLU PUMP
20	1	690437	1 1/2 CHECK VLV, SPRING LOAD
21	1	696110	BALL VALVE 1 1/2FNPT POLY
22	2	920002	3/8 SAE FLAT WASHER
23	3	716003	1 1/2 X 1 1/2 HOSE BARB
24	3	503600	CLOSE NIPPLE .50NPT
25	1	503820	BLK PIPE TEE .50NPT
26	1	505005	RED BUSH 1 TO 1/2
27	1	507010	RED BUSH 1 1/2 TO 1 BLK MAL
28	2	696082	BALL VALVE 1/2FNPT POLY
29	2	714340	1/2 NPT X 1/2 HOSE BARB
30	1	503400	BLK PIPE ST EL 90DEG .50NPT
31	1	601203	HOSE, 1 1/2 X 8 2BR BLK EPDM
32	3	520132	1.62/1.87 T-BOLT HOSE CLAMP
33	2	520070	HOSE CLAMP NO 8 STAINLESS
34	2	690589	SOLU PUMP SUPP WLD, 204 COMBO
35	1	690591	PUMP BASE WLD, 204 COMBO
36	2	361424	SOLU PUMP MT BRKT, 204 COMBO
37	4	900131	3/8UNC X 1 1/2 HEX BOLT
38	2	900129	3/8UNC X 1" HEX BOLT
39	2	900130	3/8UNC X 1 1/4 HEX BOLT
40	8	914004	3/8UNC HEX STOVER NUT



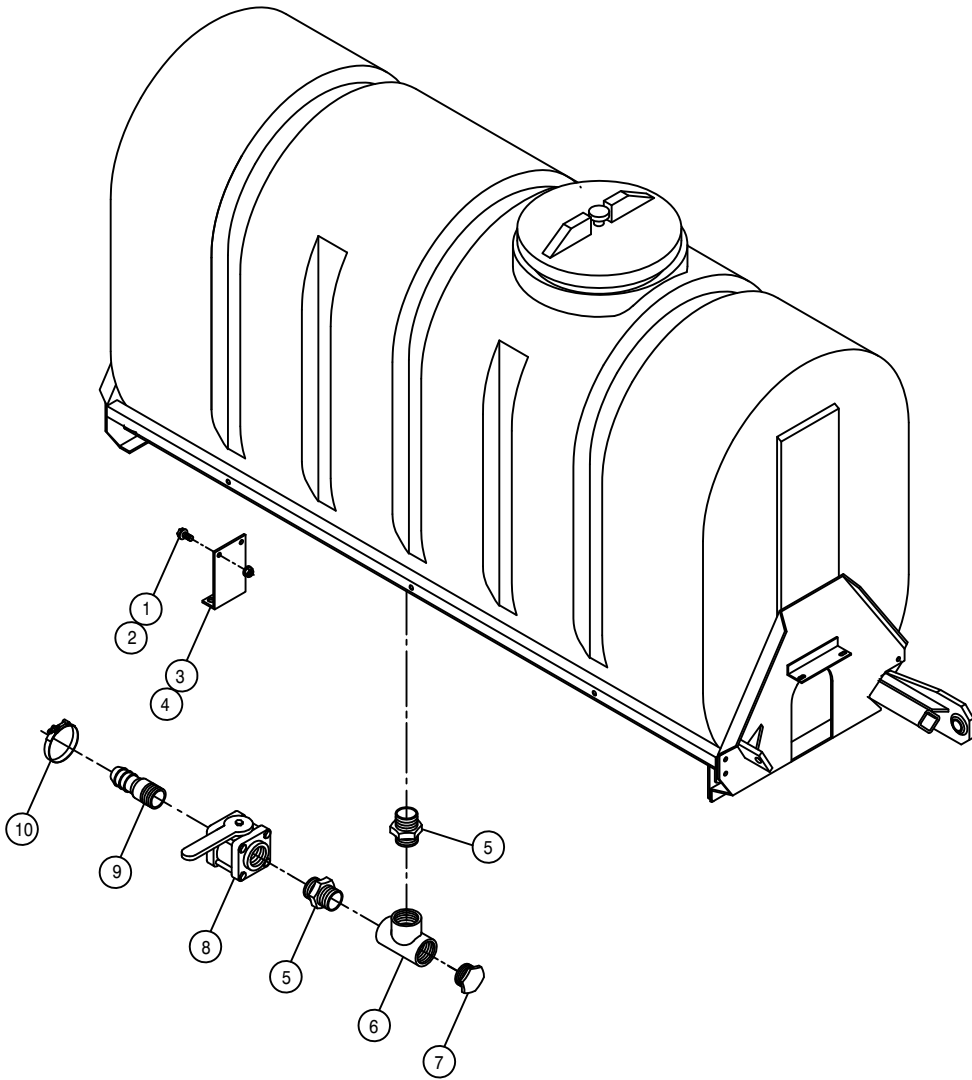
13

174013



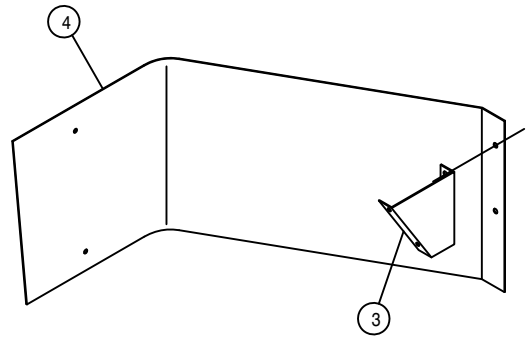
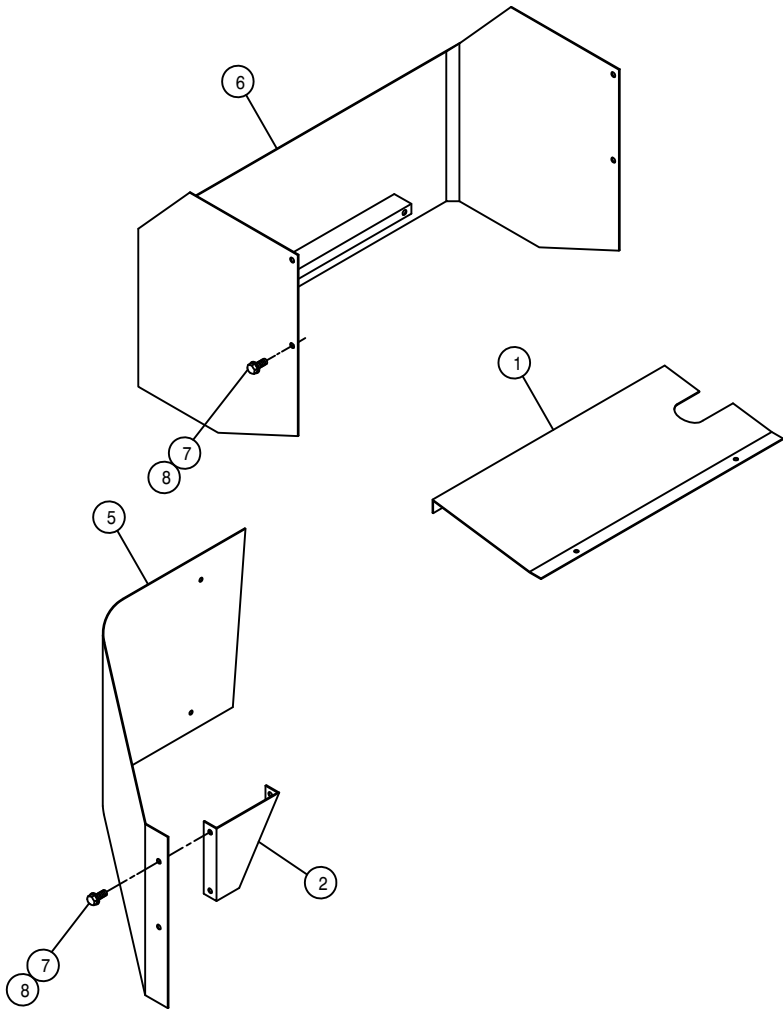
POLY 250 GALLON SOLUTION TANK ASSEMBLY

DET.	QTY	PART NO.	DESCRIPTION
	10	470118	1/4UNC X 3/4 FLANGE HEX BOLT
	10	470121	1/4UNC HEX FLANGE LOCK NUT
	3	763439	250 GAL GRAY POLY SOLU TANK 94
	4	763260	TOP STRAP 250 POLY TANK
	5	763261	FRT CATWALK WLD 250 POLY 8250
	6	763264	REAR CATWALK WLD 250 POLY8250
	7	763266	CATWALK MTG STRAP 250POLY8250
	8	763267	CATWALK MTG TAB 250 POLY 8250
	9	763366	RH POLY TANK CRADLE WLD250 91
	10	763367	LH POLY TANK CRADLE WLD250 91
	11	763381	RH REAR CRADLE PLT WLD 250 91
	12	763382	LH REAR CRADLE PLT WLD 250 91
	13	763390	POLY TANK BAND WLD 250 91
	14	900129	3/8UNC X 1" HEX BOLT
	15	901064	5/16UNC X 3/4 CARR BOLT
	16	906136	3/8UNC X 3" HEX BOLT FULLTHRD
	17	763431	8" STRAINER BASKET, SOLU TANK
	18	914004	3/8UNC HEX STOVER NUT
	19	763409	10" THD'D RING FOR TANK LID
	20	763468	TANK CRADLE SUPP BUSH,254 94
	21	618604	1.50 PLASTIC FTG ASSY-POLYTNK
	22	763410	S.S. SCREW FOR CAP RING
	23	920002	3/8 SAE FLAT WASHER
	24	618556	1/4NPT-90-1/2 HOSE BARB,POLY
	25	763446	RED POLYPROPYLENE BALL 25/64"
	26	472349	1/4 X 3/4 20THD-IN TEK TYPE
	27	763451	RH SIGHT GAGE SHLD,POLY254 94
	28	763471	TANK CRADLE SUPP WLD,204COMBO
	29	914012	3/4UNC HEX STOVER NUT
	30	900534	1" UNC X 3" HEX BOLT
	31	914010	5/8UNC HEX STOVER NUT
	32	914016	1" UNC HEX STOVER NUT
	33	470101	WASHER,2-1.03-.63 BLK NEO 65D
	34	520070	HOSE CLAMP NO 8 STAINLESS
	35	763452	LH SIGHT GAGE SHLD,POLY254 94
	36	763408	LID, THD'D W/VENT, POLY TANK
	37	472334	3/4UNC HEX JAM NUT
	38	483014	WASH,2"OD X 3/4 ID X 1/4 THK
	39	763467	TANK CRADLE SUPP SWIVEL254 94
	40	920005	5/8 SAE FLAT WASHER
	41	914002	5/16UNC HEX STOVER NUT
	42	342050	DECAL PLATE
	43	472352	#10-24THD IN X 9/16 TEK TYP 3
	44	520069	HOSE CLAMP NO 6 STAINLESS
	45	601145	HOSE, 1/2 X 41 CLEAR VINYL
	46	618549	.75 PLASTIC FTG ASSY POLY TNK
	47	500025	3/4 FNPT-90-1/2 HOSE BARB NYL
	48	760066	JET AGITATOR



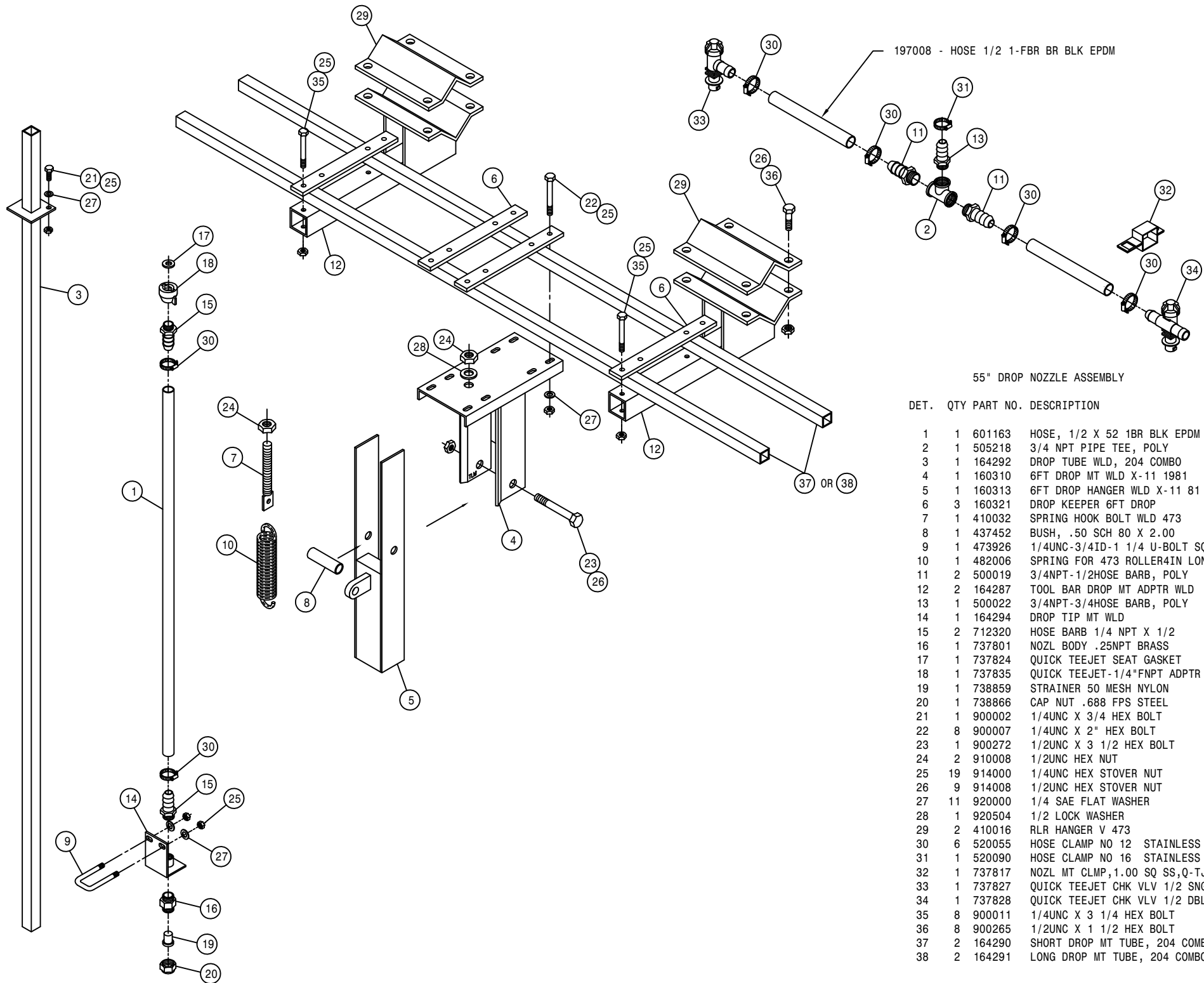
SOLUTION TANK ASSEMBLY

DET.	QTY	PART NO.	DESCRIPTION
1	2	470118	1/4UNC X 3/4 FLANGE HEX BOLT
2	2	470121	1/4UNC HEX FLANGE LOCK NUT
3	1	763363	SOLU HOSE SUPPORT 280 POLY 91
4	1	470154	CABLE TIE, 11.75" BLK PLASTIC
5	2	500028	1 1/2NPT PIPE NIPPLE, POLY
6	1	500030	1 1/2"NPT PIPE TEE, POLY
7	1	500031	1 1/2NPT PIPE PLUG, POLY
8	1	696110	BALL VALVE 1 1/2FNPT POLY
9	1	500032	1 1/2NPT X 1 1/2 H BARB, POLY
10	1	520133	1.81/2.06 T-BOLT HOSE CLAMP



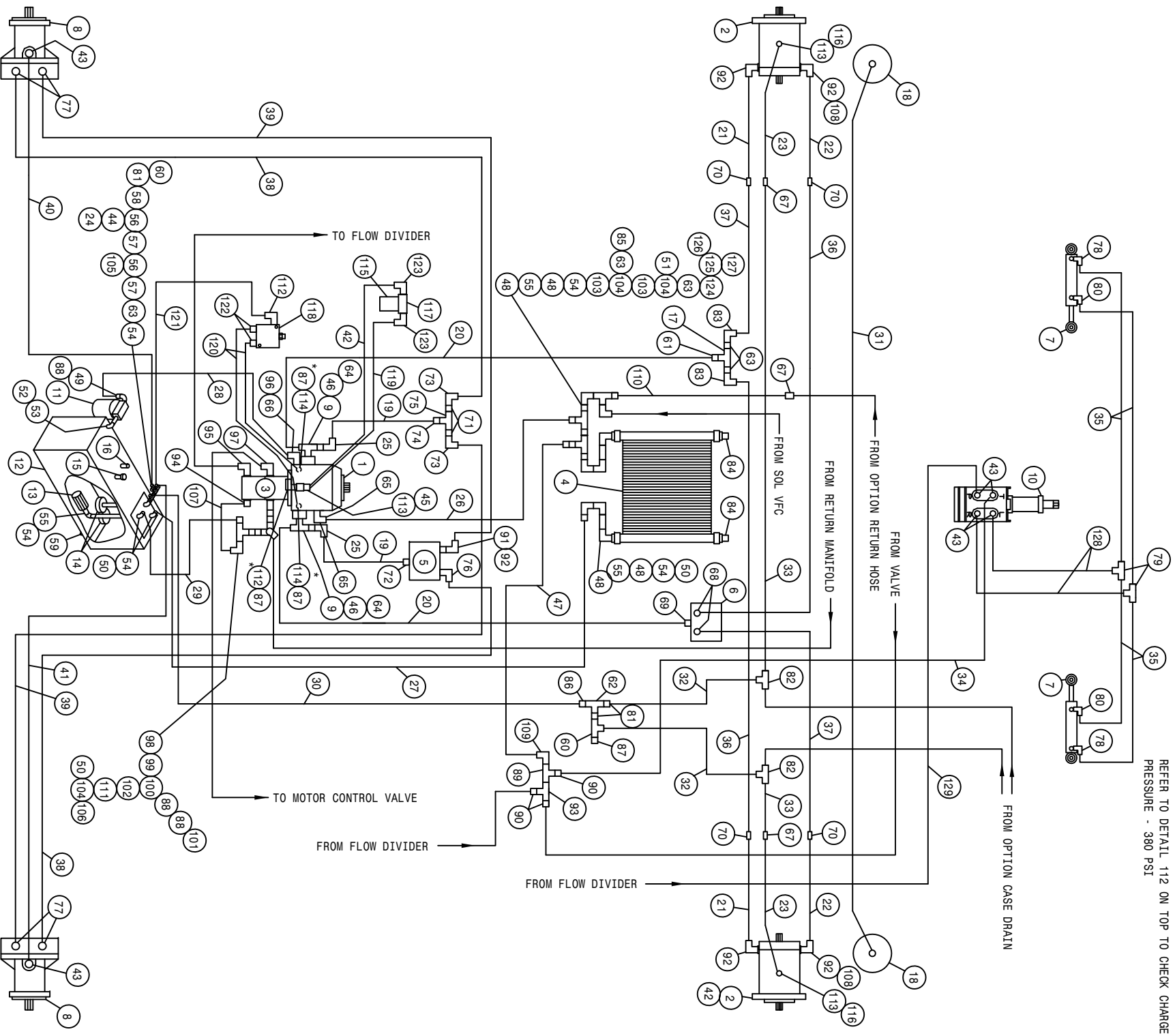
TANK SHIELDS

DET.	QTY	PART NO.	DESCRIPTION
1	1	659908	LWR FRT SHIELD, 284 COMBO 94
2	1	659520	U-CHAN 16GA X 30IN X 1.00 LIP
3	1	659921	LH TANK SHLD MT BRKT, 204COMBO
4	1	659922	RH TANK SHIELD, 204 COMBO
5	1	659923	LH TANK SHIELD, 204 COMBO
6	1	659924	FRT SHIELD WLD, 204 COMBO
7	18	470118	1/4UNC X 3/4 FLANGE HEX BOLT
8	18	470121	1/4UNC HEX FLANGE LOCK NUT



55" DROP NOZZLE ASSEMBLY

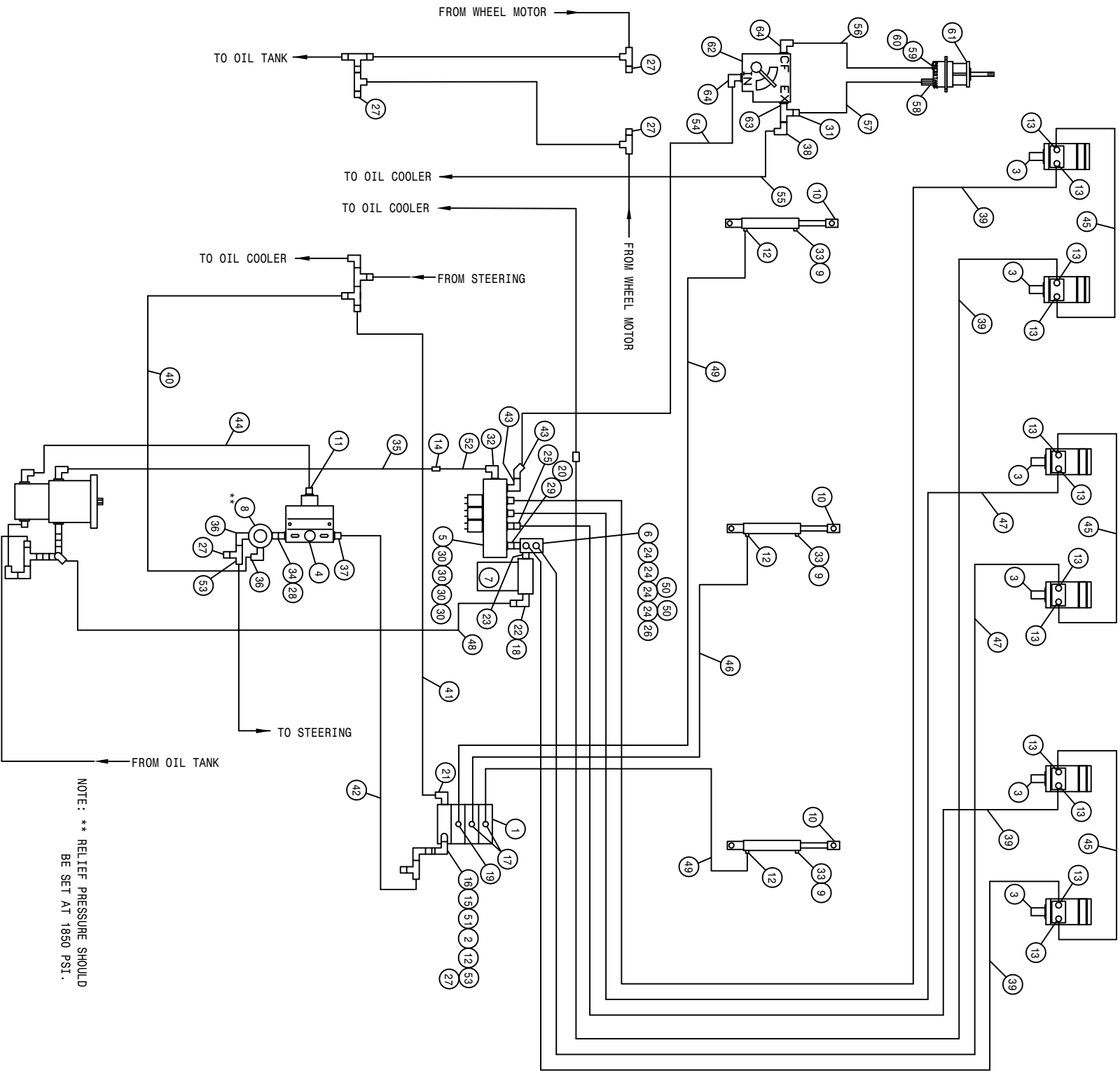
DET.	QTY	PART NO.	DESCRIPTION
1	1	601163	HOSE, 1/2 X 52 1BR BLK EPDM
2	1	505218	3/4 NPT PIPE TEE, POLY
3	1	164292	DROP TUBE WLD, 204 COMBO
4	1	160310	6FT DROP MT WLD X-11 1981
5	1	160313	6FT DROP HANGER WLD X-11 81
6	3	160321	DROP KEEPER 6FT DROP
7	1	410032	SPRING HOOK BOLT WLD 473
8	1	437452	BUSH, .50 SCH 80 X 2.00
9	1	473926	1/4UNC-3/4ID-1 1/4 U-BOLT SQ
10	1	482006	SPRING FOR 473 ROLLER4IN LONG
11	2	500019	3/4NPT-1/2HOSE BARB, POLY
12	2	164287	TOOL BAR DROP MT ADPTR WLD
13	1	500022	3/4NPT-3/4HOSE BARB, POLY
14	1	164294	DROP TIP MT WLD
15	2	712320	HOSE BARB 1/4 NPT X 1/2
16	1	737801	NOZL BODY .25NPT BRASS
17	1	737824	QUICK TEEJET SEAT GASKET
18	1	737835	QUICK TEEJET-1/4"FNPT ADPTR
19	1	738859	STRAINER 50 MESH NYLON
20	1	738866	CAP NUT .688 FPS STEEL
21	1	900002	1/4UNC X 3/4 HEX BOLT
22	8	900007	1/4UNC X 2" HEX BOLT
23	1	900272	1/2UNC X 3 1/2 HEX BOLT
24	2	910008	1/2UNC HEX NUT
25	19	914000	1/4UNC HEX STOVER NUT
26	9	914008	1/2UNC HEX STOVER NUT
27	11	920000	1/4 SAE FLAT WASHER
28	1	920504	1/2 LOCK WASHER
29	2	410016	RLR HANGER V 473
30	6	520055	HOSE CLAMP NO 12 STAINLESS
31	1	520090	HOSE CLAMP NO 16 STAINLESS
32	1	737817	NOZL MT CLMP,1.00 SQ SS,Q-TJET
33	1	737827	QUICK TEEJET CHK VLV 1/2 SNGL
34	1	737828	QUICK TEEJET CHK VLV 1/2 DBL
35	8	900011	1/4UNC X 3 1/4 HEX BOLT
36	8	900265	1/2UNC X 1 1/2 HEX BOLT
37	2	164290	SHORT DROP MT TUBE, 204 COMBO
38	2	164291	LONG DROP MT TUBE, 204 COMBO



*NOTE:
 REFER TO DETAIL 114 TO CHECK PRESSURE LIMIT
 SETTING - 4500 PSI
 REFER TO DETAIL 112 ON TOP TO CHECK CHARGE
 PRESSURE - 380 PSI

204 COMBO BASIC MACHINE CUMM HYD SCHEM 97
REFERENCE DRAWING NO. 498520

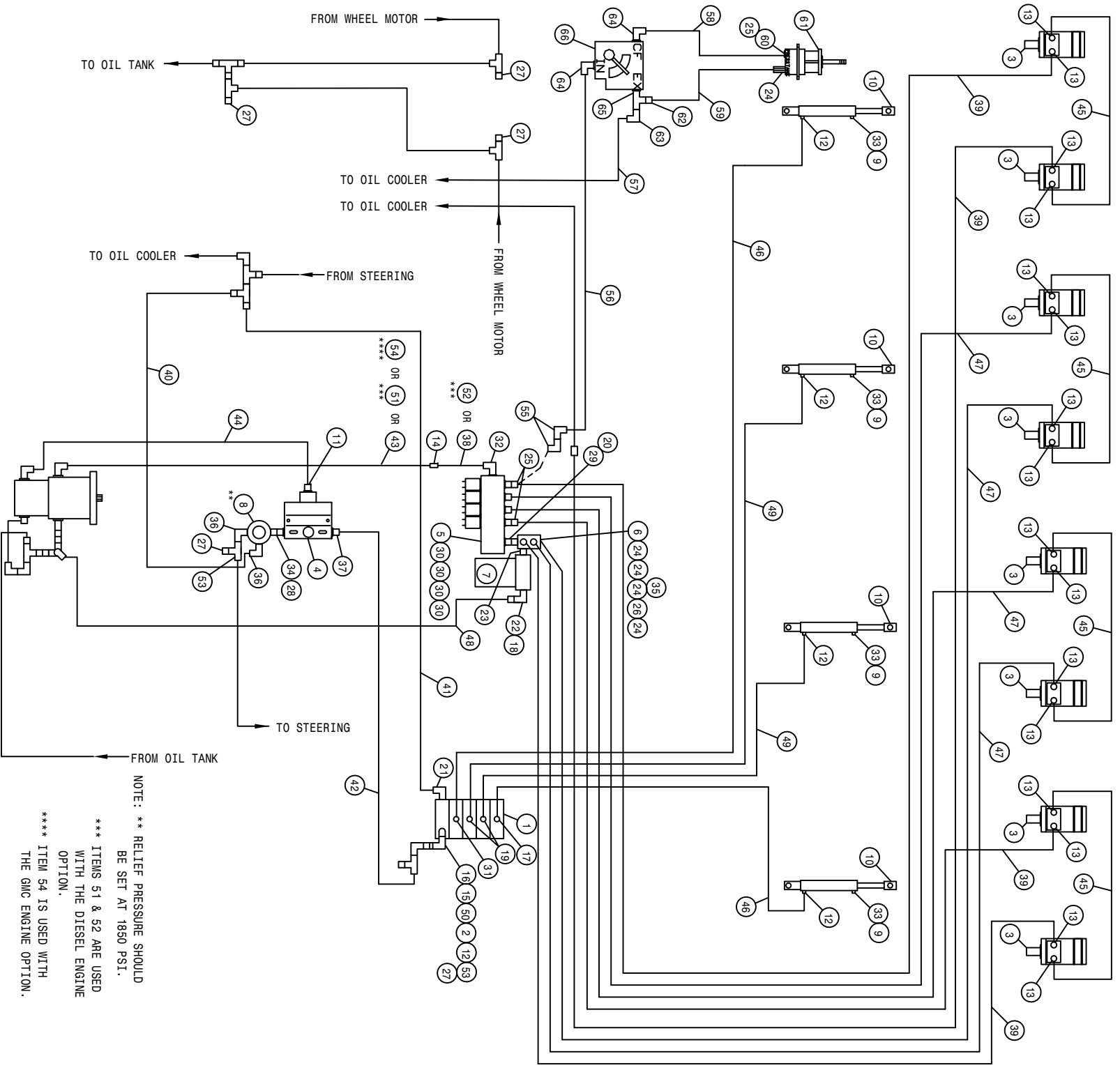
DET.	QTY	PART NO.	DESCRIPTION	DET.	QTY	PART NO.	DESCRIPTION
1	1	606902	SUND 100CC PUMP-B-MT W/FILT	66	1	618638	1IN HOSE BARB-45-1 5/16MOR
2	2	610557	SUND M35-3102 WHL MTR W/SHFT	67	3	618314	3/4MJC UNION
3	1	606937	TANDEM PUMP, 606929 & 606938	68	2	618601	7/8MJC-1 5/16MOR ADPT
4	1	618606	OIL COOLER, BLISSFIELD 65027	69	1	618186	1 5/16MJC-1 5/16MOR ADPTR
5	1	610468	POSITRACATION VLV, ALUM,885P60G	70	4	618553	1 1/16MJC-7/8MJC REDU UNION
6	1	610586	STRG CYL ASSY 1.50 X 6.0 1985	71	2	505005	RED BUSH 1 TO 1/2
7	2	620080	SUND M25-3000 WHL MTR 1.5CI	72	1	618308	1 1/16MJC-1 5/16MOR ADPTR
8	2	610567	1" 4-BOLT FLG X 1 5/16 FOR	73	2	611124	7/8MJC-90-1/2MNP LBO
9	2	618598	STRG MTR NON-LOAD REACT 1008	74	1	618434	1 1/16MJC-1MNP ADPTR
10	1	749150	GRESEN FILTER 10 MICRON 40GPM	75	1	618579	7/8MJC-90-1 5/16MOR LBO
11	1	605601	OIL TANK WLD 8240 1982	76	1	618589	7/8MJC-7/8MOR ADPTR
12	1	760097	MICHIGAN RESERVOIR FILTER	77	4	611126	9/16MJC-45-1/4MNP LBO
13	1	605600	LINE SUMP DIFFUSER	78	2	618338	9/16MJC UNION TEE
14	2	605603	FILLER BREATHER 3/4NPT	79	2	618019	9/16MJC UNION TEE
15	1	611052	DIPSTICK, 8IN	80	2	611122	9/16MJC-90-1/4MNP LBO
16	1	614453	1IN STL TEE WLD 280	81	3	618018	9/16MJC-1/2MNP ADPTR
17	1	614660	HYD CYL LEG LEVEL 2.00 X 12	82	2	610193	9/16MJC-90-3/4MNP LBO
18	2	620570	HYD TUBE ASSY,SUND,200 DIESEL	83	2	618156	7/8MJC-90-3/4MNP LBO
19	2	614707	12TWM-16FJX-16FJX-123	84	2	505102	PIPE PLUG 1.00NPT SQ HD
20	2	615634	FRT LEG INNER HYD TUBE,204 94	85	1	610300	3/4MJC-3/4MNP ADPTR
21	2	615659	FRT LEG CNTR HYD TUBE,204 94	86	1	611147	3/4MJC-1/2MNP ADPTR
22	2	615660	FRT LEG OUTER HYD TUBE,204 94	87	4	618531	9/16FJJC CAP NUT
23	2	615661	1/4MNP RUN TEE-9/16MJC	88	3	506410	BLK PIPE ST EL 90DEG 1.25NPT
24	1	618520	HOSE, 3/4 X 64 1FBR-1SPI	89	1	618311	3/4MJC UNION TEE
25	2	618191	HOSE, 1 X 81 1FBR-1SPI	90	3	618482	3/4FJJC-9/16MJC ADPTR
26	1	601395	HOSE, 1 X 29 1FBR-1SPI	91	1	618312	1 5/16MOR-1 1/16FOR ADPTR
27	1	601396	HOSE, 1 X 48 1FBR-1SPI	92	5	618535	7/8MJC-90-1 1/16MOR LBO
28	1	601376	HOSE, 1 X 48 1FBR-1SPI	93	1	618451	3/4FJJC SW RUN TEE-3/4MJC
29	1	601377	FRT LEG CML JUMPER HOSE280	94	1	618075	3/4 HOSE BARB-1 1/16MOR
30	1	614388	08C1T-08FJX-08FJX-129	95	1	611128	7/8MJC-90-7/8MOR LBO
31	1	615614	06C1T-06FJX-08FJX-30	96	1	618639	1 5/8MOR-1 5/16FOR ADPTR
32	2	614625	06C1T-06FJX-08FJX-58	97	1	618178	1 5/16MJC-90-1 5/16MOR LBO
33	2	615451	04C1T-06FJX-06FJX-78	98	1	618596	1 5/8MOR-1 1/4FNPT ADPTR
34	1	611204	04C1T-06FJX-06FJX-140	99	1	507026	1 1/4MNP HEX PIPE NIPPLE STL
35	4	614663	08C2AT-10FJX-12FJX90-70	100	1	506701	SIDE OUTLET EL 90DEG 1.25NPT
36	2	614655	08C2AT-10FJX-10FJX-125	101	1	715660	HOSE BARB 1 1/4NPT X 1 1/4
37	2	614654	08C2AT-10FJX-12FJX90-60	102	1	506005	1 1/4 TO 1 RED BUSH BLK MAL
38	2	614656	08C2AT-10FJX-10FJX-118	103	2	505201	CLOSE NIPPLE 1.00NPT
39	2	614657	06C1T-06FJX-06FJX-140	104	3	505101	BLK PIPE TEE 1.00NPT
40	1	614549	06C1T-06FJX-06FJX-126	105	1	610305	3/4MJC-90-3/4MNP LBO
41	1	615449	08C1T-08FJX-08FJX-23	106	1	716000	3/4 HOSE BARB-90-1MNP
42	1	615633	9/16MJC-45-3/4MOR LBO	107	1	601399	HOSE, 3/4 X 13 1FBR-1SPI
43	6	618496	RED BUSH 3/4 X 1/4 BLK MAL	108	2	618628	7/8MJC-45-7/8FJJC SWIV LBO
44	1	504001	3/4MJC-90-7/8MOR LBO	109	1	618609	3/4MJC-90-3/4FJJC SWIV LBO
45	1	618183	1 5/16MOR BRANCH TEE-1 5/16MJ	110	1	614662	08C1T-08FJX-08FJX-72
46	2	618599	08C1T-08FJX-08FJX-33	111	1	505105	1MNP HEX PIPE NIPPLE STL
47	1	615465	BLK PIPE ST EL 90DEG 1.00NPT	112	2	618119	9/16MJC-90-9/16MOR LBO
48	4	505200	1 1/4 NPT X 1 HOSE BARB	113	3	618327	3/4MJC-7/8MOR ADPTR
49	1	715664	1 NPT X 1 HOSE BARB	114	2	618629	9/16MOR BRANCH TEE-9/16MJC
50	4	714351	1 NPT X 3/4 HOSE BARB	115	1	605607	FILTER,10 MICRON ZINGA,HIPRES
51	1	506602	PIPE NIPPLE 1 1/4NPT-2 1/2	116	2	618590	3/4MJC-45-3/4FJJC SWIV LBO
52	1	506303	BLK PIPE EL 90DEG 1.25NPT	117	1	605606	FILTER HEAD, ZINZA HI-PRESS
53	1	505300	BLK PIPE EL 90DEG 1.00NPT	118	1	610580	REMOTE FLUSHING VALVE, SUND
54	6	505203	BLK PIPE NIPPLE 1.00NPT-4.00	119	1	616034	08C1T-08FJX-08FJX-17
55	3	504955	BLK PIPE TEE .75NPT	120	2	616043	04C1T-06FJX-06FJX-23
56	2	504702	CLOSE NIPPLE .75NPT	121	1	616048	04C1T-06FJX-06FJX-35
57	2	504702	RED BUSH 3/4 NPT X 1/2 NPT	122	2	618126	9/16MJC-9/16MOR ADPTR
58	1	501102	1/4 PIPE PLUG	123	2	618474	3/4MJC-90-1 1/16MOR LBO
59	1	618486	9/16FJJC SW RUN TEE-9/16MJC	124	1	618156	7/8MJC-90-3/4MNP LBO
60	2	618322	1 5/16MJC-1MNP ADPTR	125	1	618333	7/8FJJC SW RUN TEE-7/8MJC
61	1	503820	BLK PIPE TEE .50NPT	126	1	618523	7/8FJJC-3/4MJC ADPTR
62	1	505213	RED BUSH 1 X 3/4 BLK MAL	127	1	618301	7/8MJC-90-7/8FJJC SWIV LBO
63	5	618541	1 5/16FJJC-1 1/16MJC ADPTR	128	2	616028	04C1T-06FJX-06FJX-47
64	2	618118	3/4 HOSE BARB-90-1 1/16MOR	129	1	616040	04C1T-06FJX-06FJX-67
65	1	618118					



NOTE: ** RELIEF PRESSURE SHOULD
BE SET AT 1850 PSI.

204 COMBO 6R QUAD 3L W/T-TROL HYD SCHEM 94
REFERENCE DRAWING NO. 498470

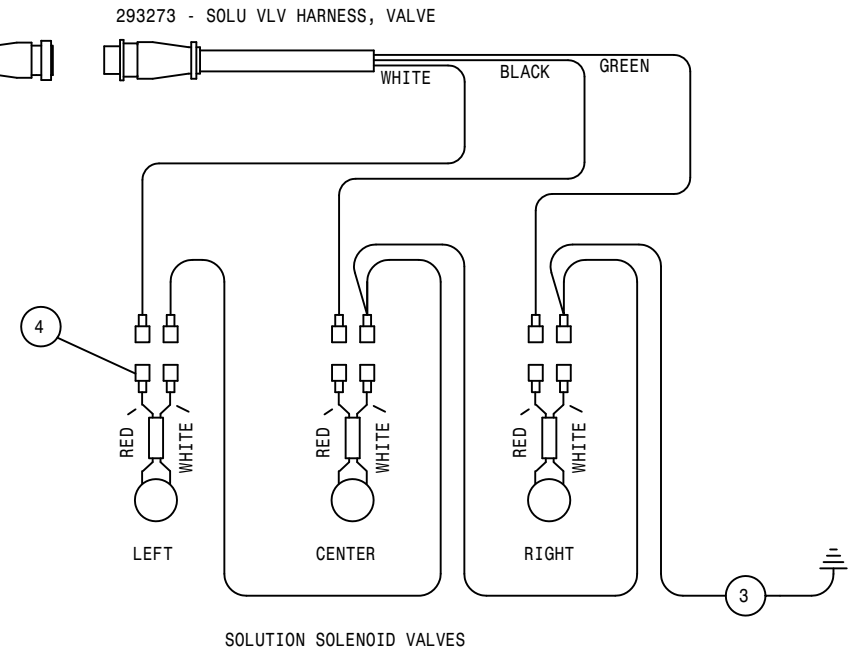
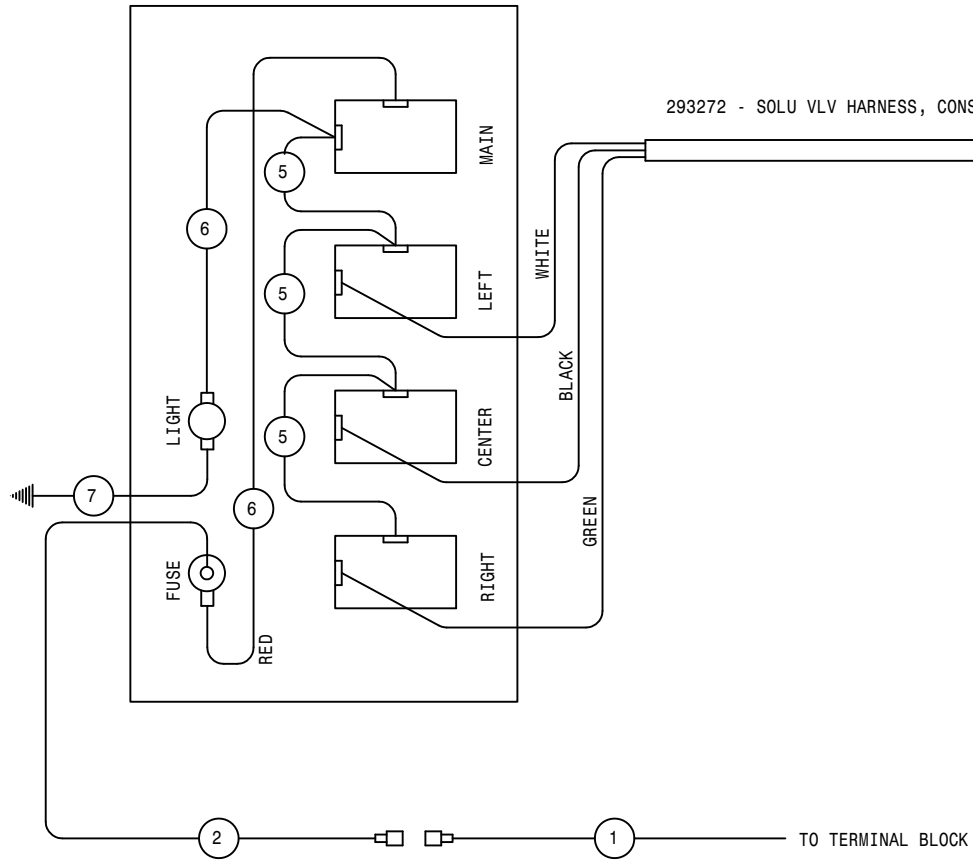
DET.	QTY	PART NO.	DESCRIPTION	DET.	QTY	PART NO.	DESCRIPTION
1	1	610532	ELECT HYD STACK VLV, 3 SECT	33	3	501452	ST EL 90DEG .25NPT, STEEL,PLT
2	1	610447	HYD FILTER, INLINE 1/4FNPT 90M	*34	1	500000	1/2MNPT HEX PIPE NIPPLE STL
3	6	610547	HYD MOTOR 4.5CI 1IN SHFT	*35	1	614350	16C2AT-16FJX-16FJX-55
*4	1	607504	FLO DIV B50 2-8GPM 7/8 FOR	*36	2	618107	9/16MJIC-90-1/2MNPT LBO
5	1	610467	MODULAR MTR CONTROL ELECT VLV	*37	1	618310	9/16MJIC-7/8MOR ADPTR
*6	1	614633	HYD MANIF 8200 86	38	1	618301	7/8MJIC-90-7/8FJIC SWIV LBO
*7	1	605601	GRESEN FILTER 10 MICRON 40GPM	39	4	614690	08C1T-08FJX-08FJX-192
*8	1	607512	RELIEF VALVE, RL50, 1850 PSI	*40	1	616042	04C1T-06FJX-06FJX-13
9	3	470114	BREATHER FILTER VENT, 1/4 NPT	*41	1	614627	06C1T-06FJX-06FJX-45
10	3	620900	CYL ASSY CC2016 D00 SRG 180	*42	1	615616	04C1T-06FJX-06FJX-88
*11	4	611126	7/8MJIC-7/8MOR ADPTR	*43	2	618609	3/4MJIC-90-3/4FJIC SWIV LBO
12	4	611122	9/16MJIC-90-1/4MNPT LBO	*44	1	614664	10C1T-10FJX-10FJX-98
13	12	618327	3/4MJIC-7/8MOR ADPTR	45	3	616025	08C1T-08FJX-08FJX-50
*14	1	618577	1 5/16MJIC UNION	46	1	614077	04C1T-06FJX-06FJX-88
15	1	618440	9/16MJIC-90-9/16MOR EX LG LBO	47	2	614688	08C1T-08FJX-08FJX-108
16	1	618170	3/4MOR-9/16FOR ADPTR	*48	1	601289	HOSE, 1 1/4 X 144 2BR RED
17	2	618119	9/16MJIC-90-9/16MOR LBO	49	2	614101	04C1T-06FJX-06FJX-133
*18	1	715660	HOSE BARB 1 1/4NPT X 1 1/4	*50	2	618532	3/4FJIC CAP NUT
19	1	618425	9/16MJIC-45-9/16MOR LBO	51	1	618608	9/16FJIC SWIV-1/4MNPT
*20	1	618587	1 5/16FJIC SWIV-1MNPT	*52	1	614703	HYD TUBE ASSY, 200 MAIN
21	1	618600	9/16MJIC-90-7/8MOR LBO	*53	2	618486	9/16FJIC SW RUN TEE-9/16MJIC
*22	1	506410	BLK PIPE ST EL 90DEG 1.25NPT	*54	1	616034	08C1T-08FJX-08FJX-17
*23	1	618144	1 1/4-1MP HEX PIPE NIPPLE STL	*55	1	615628	10C2AT-10FJX-10FJX-72
*24	4	611145	3/4MJIC-90-1/2MNPT LBO	*56	1	615465	08C1T-08FJX-08FJX-33
25	1	618590	3/4MJIC-45-3/4FJIC SWIV LBO	*57	1	615633	08C1T-08FJX-08FJX-23
*26	1	503700	PIPE PLUG .50NPT SQ HD	*58	1	611145	3/4MJIC-90-1/2MNPT LBO
*27	5	618531	9/16FJIC CAP NUT	*59	1	618241	3/4MJIC-90-3/4MOR LBO
*28	1	618072	7/8MOR-1/2FNPT ADPTR	*60	1	618590	3/4MJIC-45-3/4FJIC SWIV LBO
29	1	618186	1 5/16MJIC-1 5/16MOR ADPTR	*61	1	610319	HYD MTR HYDRO HMI PUMP
30	4	618469	3/4MJIC-1 1/16MOR ADPTR	*62	1	606818	FLO CONT FCR51 0-16GPM 7/8FOR
*31	1	618523	7/8FJIC-3/4MJIC ADPTR	*63	1	618130	7/8MOR RUN TEE-7/8MJIC
32	1	618178	1 5/16MJIC-90-1 5/16MOR LBO	*64	2	618183	3/4MJIC-90-7/8MOR LBO



NOTE: ** RELIEF PRESSURE SHOULD BE SET AT 1850 PSI.
 *** ITEMS 51 & 52 ARE USED WITH THE DIESEL ENGINE OPTION.
 **** ITEM 54 IS USED WITH THE GMC ENGINE OPTION.

204 COMBO 8R QUAD 4L W/T-TROL HYD SCHEM 96
REFERENCE DRAWING NO. 498511

DET.	QTY	PART NO.	DESCRIPTION	DET.	QTY	PART NO.	DESCRIPTION
1	1	610532	ELECT HYD STACK VLV, 3 SECT	*34	1	500000	1/2MNPT HEX PIPE NIPPLE STL
2	1	610447	HYD FILTER, INLINE 1/4FNPT 90M	*35	1	618532	3/4FJIC CAP NUT
3	8	610547	HYD MOTOR 4.5CI 1IN SHFT	*36	2	618107	9/16MJIC-90-1/2MNPT LBO
*4	1	607504	FLO DIV B50 2-8GPM 7/8 FOR	*37	1	618310	9/16MJIC-7/8MOR ADPTR
5	1	610467	MODULAR MTR CONTROL ELECT VLV	*38	1	614348	16C2AT-16FJX-16FJX-25
*6	1	614633	HYD MANIF 8200 86	39	4	614691	08C1T-08FJX-08FJX-220
*7	1	605601	GRESEN FILTER 10 MICRON 40GPM	*40	1	616042	04C1T-06FJX-06FJX-13
*8	1	607512	RELIEF VALVE, RL50, 1850 PSI	*41	1	614627	06C1T-06FJX-06FJX-45
9	4	470114	BREATHER FILTER VENT, 1/4 NPT	*42	1	615616	04C1T-06FJX-06FJX-65
10	4	620900	CYL ASSY CC2016 D00 SRG 180	43	1	614687	HYD TUBE ASSY SUND AUX 200 90
*11	1	611126	7/8MJIC-7/8MOR ADPTR	44	1	614664	HYD TUBE ASSY SUND AUX 200 90
12	5	611122	9/16MJIC-90-1/4MNPT LBO	45	4	616025	10C1T-10FJX-10FJX-98
13	16	618327	3/4MJIC-7/8MOR ADPTR	46	2	611246	08C1T-08FJX-08FJX-50
*14	1	618577	1 5/16MJIC UNION	47	4	614689	04C1T-06FJX-06FJX-174
15	1	618440	9/16MJIC-90-9/16MOR EX LG LBO	*48	1	601289	HOSE, 1 1/4 X 144 2BR RED
16	1	618170	3/4MOR-9/16FOR ADPTR	49	2	614101	04C1T-06FJX-06FJX-133
17	1	618119	9/16MJIC-90-9/16MOR LBO	50	1	618608	9/16FJIC SWIV-1/4MNPT
*18	1	715660	HOSE BARB 1 1/4NPT X 1 1/4	*51	1	614350	16C2AT-16FJX-16FJX-55
19	2	618425	9/16MJIC-45-9/16MOR LBO	*52	1	614703	HYD TUBE ASSY, 200 MAIN
*20	1	618587	1 5/16FJIC SWIV-1MNPT	*53	2	618486	9/16FJIC SW RUN TEE-9/16MJIC
21	1	618600	9/16MJIC-90-7/8MOR LBO	54	1	614719	HYD TUBE ASSY, AUX 204 GMC 96
*22	1	506410	BLK PIPE ST EL 90DEG 1.25NPT	*55	2	618609	3/4MJIC-90-3/4FJIC SWIV LBO
*23	1	618144	1 1/4-IMP HEX PIPE NIPPLE STL	*56	1	616034	08C1T-08FJX-08FJX-17
*24	5	611145	3/4MJIC-90-1/2MNPT LBO	*57	1	615628	10C2AT-10FJX-10FJX-72
25	3	618590	3/4MJIC-45-3/4FJIC SWIV LBO	*58	1	615465	08C1T-08FJX-08FJX-33
*26	1	503700	PIPE PLUG, 50NPT SQ HD	*59	1	615633	08C1T-08FJX-08FJX-23
*27	5	618531	9/16FJIC CAP NUT	*60	1	618241	3/4MJIC-90-3/4MOR LBO
*28	1	618072	7/8MOR-1/2FNPT ADPTR	*61	1	610319	HYD MTR HYPRO HMI PUMP
29	1	618186	1 5/16MJIC-1 5/16MOR ADPTR	*62	1	618523	7/8FJIC-3/4MJIC ADPTR
30	4	618469	3/4MJIC-1 1/16MOR ADPTR	*63	1	618301	7/8MJIC-90-7/8FJIC SWIV LBO
31	1	618126	9/16MJIC-9/16MOR ADPTR	*64	2	618183	3/4MJIC-90-7/8MOR LBO
32	1	618178	1 5/16MJIC-90-1 5/16MOR LBO	*65	1	618130	7/8MOR RUN TEE-7/8MJIC
33	4	501452	ST EL 90DEG, 25NPT, STEEL, PLT	*66	1	606818	FLO CONT FCR51 0-16GPM 7/8FOR



7	1	291471	16GA BLK-291583-291598-6
6	2	293343	16GA RED-291583-293147-7
5	3	293135	14GA RED-291583-291583-3
4	3	293317	DIODE SHUNT CABLE ASSY
3	1	293254	SOLU SOL GND WIRE ASSY
2	1	293338	16GA BLK-291580-293147-20
1	1	293339	16GA BLK-291557-291591-40
DET	REQ	DESCRIPTION	
HAGIE HAGIE MANUFACTURING COMPANY CLARION, IOWA 50525			
REMOVE ALL SHARP CORNERS & BURRS			
TOLERANCE UNLESS OTHERWISE SPECIFIED			
FRACTION	± 1/32	DECIMALS	X.XX ±.03 X.XXX ±.005
DESCRIPTION	WIRE DIAG, 204 COMBO SOLU VLV		
DRAWN BY	T. MARKER	SCALE	NONE (1)
CHECKED BY	APPROVED BY		
DATE	10-26-94	DRAWING NUMBER	498472
SHEET	OF		

